

FALL ARREST SYSTEMS

XSPLATFORMS GUARDRAILS, ANCHORING POINTS, AND STEEL CABLES



XSPlatforms[®]

WORKING SAFELY AT HEIGHT ACCORDING TO RIGID LIFELINES™

Working at height is dangerous. But at relatively modest heights, people feel comfortable and often underestimate the risks. This results in hundreds of preventable accidents every year-- often with injuries or fatalities.

Therefore, adequate fall protection is important for anyone working at height.

No matter which type of fall protection you choose, every XSPlatforms solution rests on a number of crucial requirements:

RELIABLE

The Engineering department at XSPlatforms is the first in the industry to be certified by the TÜV quality institute and authorized to perform CE-testing. Every step of the product life cycle, from design through maintenance, is performed according to certified procedures. Each product receives a unique serial number for quality assurance as well as traceability.

PRACTICAL

The more user-friendly fall protection equipment is, the more the user can focus on their work without being distracted. The opposite is also true: a poorly designed system increases the temptation to not use the safety equipment. A good, practical design is therefore essential to both productivity and safety.

UNIVERSAL

Fall protection systems from XSPlatforms can be mounted on robust or extremely fragile rooftops. Apply on any type of surface (wood, steel, concrete, and others) using any seal material (plastic or bitumen). There are even solutions for installations on walls or ceilings. Intelligent product innovations ensure that all systems can be installed quickly and easily.

DURABLE

A good fall protection system is durable in every way: low-maintenance and produced with sturdy materials. XSPlatforms uses aluminum and stainless steel in all products. Our systems are designed to ensure rooftops and roofing materials sustain little or no damage during installation, inspection, or in the event of a fall.



Fall protection is available in various forms. XSPlatforms from Rigid Lifelines offers a complete range of innovative products. A custom solution combined with an optimal balance between price and user-friendliness can be created for any building. We are proud to offer a versatile system that can meet your needs.

ATTRACTIVE DESIGN

The primary purposes of fall protection are safety and practicality. However permanent fall prevention, guardrails in particular, can have an impact on the appearance of a building. XSPlatforms from Rigid Lifelines are designed not to detract from the architectural value of a building, and in some cases they even accentuate it.

EFFICIENT

Innovation is often found in what appears to be small details. Thanks to intelligent, well planned designs, fall protection products are efficiently packaged and require very little room during transport and storage. Once installed, they are low-maintenance, easy to inspect, and, if required, simple to replace.

CUSTOM SOLUTIONS

Various rooftop solutions can be developed using the fall protection products offered by XSPlatforms. From the highest level of protection with maximum freedom of movement to a simple, compliant system that requires more user knowledge, a custom solution is available for every building and every situation.



FOUR CLASSES OF FALL PROTECTION



XS GUARDRAIL SYSTEMS

(Optimal Fall Protection)

Installing guardrails allows the entire rooftop to be accessed safely without the need for extra precautions or personal protection equipment. The user does not need to be knowledgeable in fall protection systems.

Standard: ANSI/ASSE Z359.1 2007, OSHA 1910.66, 1926.502, CAN/CSA Z259. Number of users: unlimited. Suitable for all rooftops.



XS LINKED CABLE SYSTEMS

(Practical Fall Protection)

Permanent anchorage points are connected by steel cable to form a path that follows the contour of the roof edge. This system allows full perimeter access to any desired work space on the roof. The user remains attached to the line while maintaining freedom of movement on either side of the cable.

Standard: ANSI/ASSE Z359.1 2007, OSHA 1910.66, 1926.502, CAN/CSA Z259. Number of users: 4 per span/system. Suitable for all rooftops.



XS LINKED CABLE SYSTEMS

(Economical Fall Protection)

Permanent steel cable is attached to different anchorage points to allow access to specific work areas. This system covers specific spans on a rooftop and workers can travel from one end to another. Additional Globe Anchors may be required to minimize swing fall concerns.

Standard: ANSI/ASSE Z359.1 2007, OSHA 1910.66, 1926.502, CAN/CSA Z259. Number of users: 4 per span/system. Suitable for all rooftops.



XS SINGLE ANCHOR SYSTEMS

(Budget Fall Protection)

Multiple anchor points with no cable in between each anchorage, typically 20' apart and at least 13' from roof's edge. Worker will need to approach and attach to anchors from a safe zone.

Standard: ANSI/ASSE Z359.1 2007, OSHA 1910.66, 1926.502, CAN/CSA Z259. Number of users: 1 per anchor point. Suitable for all rooftops.



GUARDRAILS



STRAIGHT AND CURVED

XS Guardrails are available in 'straight' and curved models. The curved design provides extra safety by keeping people further from the roof edge. Thanks to their attractive design, curved guardrail can accentuate the architectural design of the building.

COLLAPSIBLE

Maximum protection with minimal impact on architectural design. Straight guardrails in the XS Guardrail series are also available in a collapsible version, only making them visible when the work is being completed.

FREE STANDING

XS Guardrails stand freely and therefore do not need to be attached to the roof structure. The long stand bases and concrete counterweights keep the system securely in place. This minimizes the risk of leaks and moisture penetration.

INTEGRATED TOE PLATE

For flat roof buildings, XS Guardrails can easily be equipped with an integrated toe plate to prevent materials from rolling or sliding off the roof.

The horizontal elements of the guardrails can be installed permanently using a special click system. A special clip (shown here) is also available for temporary railings which allows easy disassembly of the various elements. This makes the system an ideal fall protection solution for temporary sites such as building areas.



The highest degree of fall protection (four stars) is achieved using guardrails. Either a permanent or temporary solution, XS Guardrails ensure the safety of an unlimited number of people and create optimal protection for minimal effort.



EASY TO INSTALL

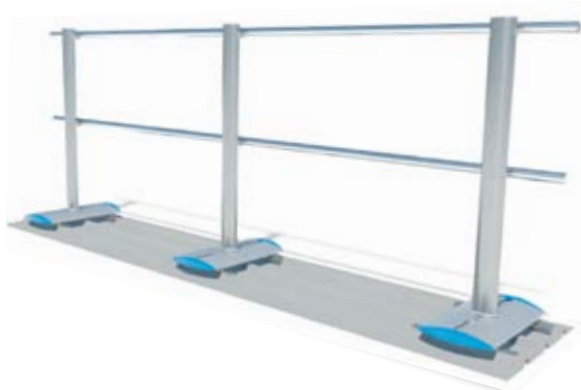
Two people can install 820 to 984 ft (250 to 300 meters) per day. Because the components 'click' into place, practically no tools are required - only one special wrench is all that is necessary. The same is true for the horizontal elements that are clicked into place from above instead of passed through the stands from the side. This increases the safety for the workers installing the system.

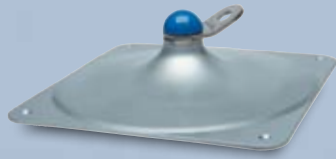
ALSO SUITABLE FOR UPRIGHT AND FLAT ROOF EDGES

XS Guardrails are available with stands for mounting to the facade or on the parapet of roofs with upright eaves such as flat roofs.



Because the system does not need to be attached to the roof, it is suitable for any surface and any material with the help of a special profile. The profiles are cut to size by the distributor and can therefore always be delivered quickly.





XS GLOBE

Suitable as a stand-alone anchoring point equipped with a 360° swiveling safety eye.



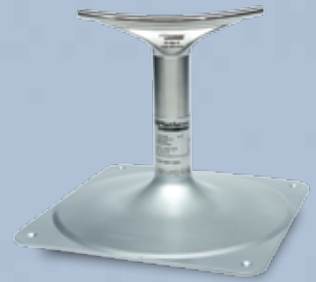
XS IMPACT

Suitable as an anchoring point in an XS Linked steel cable path and equipped with an integrated fall arrestor.



XS IMPACT 360°

Suitable as a stand-alone anchoring point equipped with an integrated fall arrestor.



XS LINKED

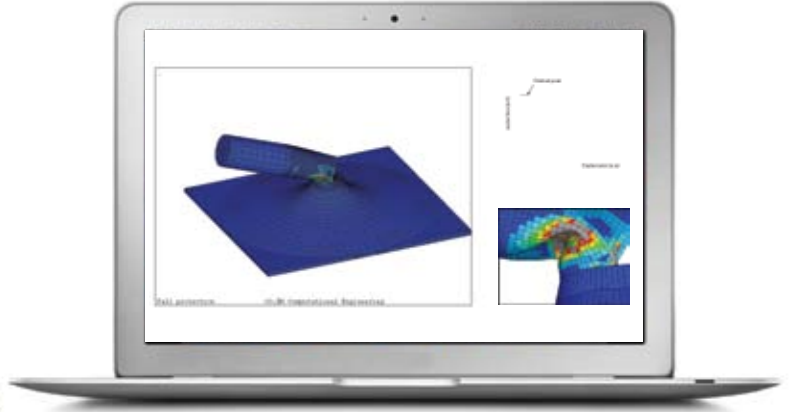
Steel cable path, used in combination with XS Impact.

ANCHORING POINTS AND STEEL CABLES

XSPatforms fall protection systems use various combinations of anchoring points and steel cables to qualify for one to three stars of fall protection. The XS product line includes three types of anchoring points and steel cable systems to achieve custom solutions.



Computer animation shows how the intelligent reaction mechanism bends in the direction of the fall to absorb the shock. The picture below shows this effect in practice.



INTEGRATED FALL ARREST

The XS Impact and XS Impact 360° anchoring points contain an intelligent reaction mechanism that bends in the direction of the fall to absorb the shock. This fall arrestor allows the XS Linked Cable System path to bridge greater distances between two anchoring points and requires fewer anchorages over the entire path.

QUICK INSTALLATION

The three anchoring points in the XS series utilize a separate base plate that is fastened directly to the roofing material with just one anchor. This results in installation times that are four to five times faster than standard systems. The system is also perfect for activities that are completed quickly such as inspections, cleaning, or small-scale repairs.

MAXIMUM PROTECTION OF THE ROOF CONSTRUCTION

The integrated fall arrestor in the XS Impact and XS Impact 360° ensures that even extremely light and fragile roof constructions sustain minimal or no damage in the event of a fall.

UNIVERSAL APPLICATION

Anchoring points can be used on all roof types thanks to the high absorption properties of the fall arrestor. Installation kits are available for a wide range of roofing materials. The profiles used in the kits are cut to size by the distributor and available for quick delivery.

EASY TO INSPECT

All XS anchoring points can be inspected at any time, both visually and through a pull-test (without activating the anchoring point). The strength of the attachment in a concrete roof can be easily verified without disassembling the anchoring point.

EASY TO REPAIR

After a fall, the anchoring point must be replaced. Thanks to the separate base plates (which are usually not damaged by a fall and typically do not need to be replaced) repairs are simple, relatively inexpensive, and do not damage the roof.

OPTIMAL FREEDOM OF MOVEMENT

The XS Slider is a 'traveler' or glider that moves smoothly along the cable, past cable holders, and through curves on both sides of the steel cable path. All while the user remains securely attached to the cable, and can work safely without restrictions.

REVOLUTIONARY PROTECTION

Anchoring systems from XSPlatforms satisfy all necessary safety standards and regulations. Thanks to small but significant innovations, XSPlatforms continues to raise the bar. For example, steel cables must be regularly examined to determine if the cable is still connected over the entire length of the 'terminal' and has not gradually shifted. The XS Linked Cable System is equipped with a visual indicator that allows this critical point to be controlled in the blink of an eye.



CEILING AND WALLS

Fall protection is required when working on rooftops and within the walls of a building. The XS Linked Wall and Ceiling systems offer users optimal safety and freedom of movement.

The XS Linked Wall and Ceiling system allows a steel cable path to be installed along a wall or ceiling. The system includes a beginning and an end plate, support plates, and one or more separate XS Dynamic fall arrestors.

The XS Dynamic fall arrestor is attached between the steel cables and the anchoring points to reduce the load that occurs during a fall by approximately 60%. It also eliminates the need for a separate arrestor (as part of the personal fall protection) in up to 95% of cases.

ABOUT RIGID LIFELINES™

Rigid Lifelines™ is a North American leader in turnkey fall protection solutions. We manufacture and distribute a wide range of fall arrest, fall restraint, fall prevention, hard goods, soft goods, and accessories. Rigid Lifelines engineers superior systems and solutions for common problems in fall protection. These systems are ideal for keeping industrial employees protected while working at height. Rigid Lifelines manufactures fall protection systems in two locations in the United States—Morgantown, Pennsylvania and Las Vegas, Nevada. We are proud to be a Certified Welding Fabricator in accordance with the American Welding Society. Plus, all of our fall protection systems exceed OSHA and ANSI requirements.



Rigid Lifelines is proud to offer fall protection solutions for any location inside or outside of industrial and construction facilities. Our product line includes:

ENGINEERED TRACK

Rigid Lifelines proudly engineers rigid track systems for various applications. Steel, stainless steel, or aluminum enclosed tracks can be used to adapt to the needs of your facility. To ensure complete compliance, all of our systems meet or exceed OSHA and ANSI requirements. Plus, our engineered track systems have superior warranties.

XSPATFORMS ROOFTOP SOLUTIONS

XSPatforms uses advanced fall protection technology to provide rooftop solutions for different types of roofing materials. The patented design of the anchorage device allows for faster and less invasive installation. Plus, each anchorage can cover longer distances in comparison to other rooftop systems.

SOFT GOODS

As part of our comprehensive line of fall protection solutions, Rigid Lifelines offers several types of full body harnesses, energy absorbing lanyards, and self-retracting lifelines. Our harnesses use the latest technology to provide a secure and comfortable fit.

DEALER TRAINING

Our experienced staff has developed a comprehensive fall protection training program for our dealers. Our program covers: OSHA and ANSI Z359 requirements for General Industry and Construction, properly fitting a full body harness, identifying fall hazards, system installation considerations, and a basic overview of all Rigid Lifelines products.



Form # RLL-XSFAS-0313

RIGIDLIFELINES.COM

info@rigidlifelines.com

604 Hemlock Road Morgantown, PA 19543

800-869-2080

610-286-7200

610-286-0085 Fax