



4501 Gateway Boulevard
Springfield, Ohio 45502
Toll Free: 1-800-955-9967
Fax: 937-325-5319
www.rmhoist.com

PRODUCT LINE

Innovation...Performance...Reliability



SPACEMASTER® SX & SXL WIRE ROPE HOISTS 1/2 - 250 TON CAPACITY

Normal Headroom



Optional:
RSN hook → Monorail and jib
crane applications

Low Headroom



Best solution
for single girder
cranes

Double Girder Trolley



Superior
clearance and
headroom

High Capacity & Special Application Hoists



Customized to fit
your needs Space-saving,
compact designs

EX Hazardous Location Hoists



Class I,
Group C&D,
(Division 2 only)
Up to 20 tons

SXL Heavy Lifting Equipment



LK & LOADMATE® ELECTRIC CHAIN HOISTS 1/8 - 5 TON CAPACITY

Fixed Suspensions



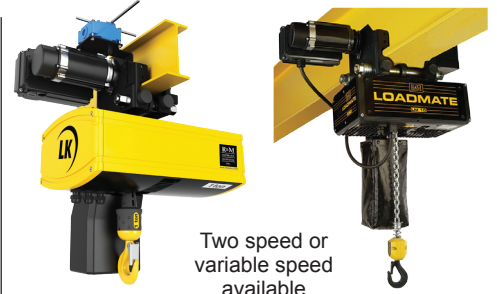
Top hook or lug
suspensions
available

Manual Trolleys



Push or hand
geared trolleys
available

Motorized Trolleys



Two speed or
variable speed
available

Low Headroom



Most economical
low headroom
chain hoist in
the industry

Variable Speed



Load capacities
from 1/4 to 2 tons

Digichain



Work station
control application

Your Distributor Contact Is:

CRANE PACKAGES

QX Modular Crane Packages 1/2 - 80 Ton



- Plug-in festoon system

NRGmaster Electrification System - 1/2 - 80 Ton



- Increase hook coverage on floor
- Decrease maintenance pitfalls associated with traditional C-track festoons
- Radio control comes standard

QLP Push Crane Packages 1/2 - 2 Ton



- Available on LM05 & LM10 models
- Single speed, or two-speed hoist controls
- Plug-in push button pendant
- Standard crane spans up to 30ft

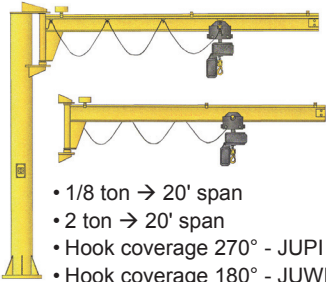
QL Modular Crane Packages 1/8 - 5 Ton



- Single girder top running/single girder under running crane configurations
- Loadmate® Electric chain hoist with motorized trolley
- Standard crane spans up to 62ft

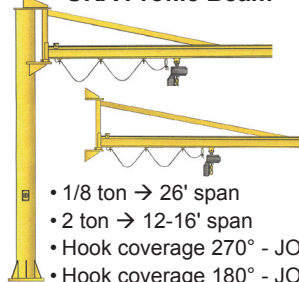
SPACEMASTER JC JIB CRANES 1/8 TO 2 TON & CONTROLMASTER™ ANTI-SWAY

JUPI Under Braced Free-Standing & JUWI Wall Mounted Jib With Traditional W Beam



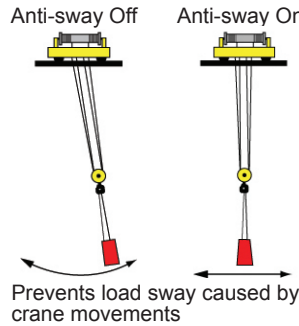
- 1/8 ton → 20' span
- 2 ton → 20' span
- Hook coverage 270° - JUPI
- Hook coverage 180° - JUWI

JOPU Over Braced Free-Standing & JOWU Wall Mounted Jib With R&M's UKA Profile Beam



- 1/8 ton → 26' span
- 2 ton → 12-16' span
- Hook coverage 270° - JOPU
- Hook coverage 180° - JOWU

ControlMaster™ Anti-Sway System



The first wire rope hoist platform to receive the HMI-Certified license!

CONTROLMASTER™, HOISTMONITOR®, RACON® III & CRANE COMPONENTS

ControlMaster™ Crane Inverter Control System



An economical, variable frequency drive (VFD) solution for controlling hoist, trolley and bridge motions

HoistMonitor®



HoistMonitor® can be added to the Spacemaster® SX hoist controls to assist in the safe operation, maintenance and performance of the hoist and crane.

Racon® III Radio Control



- CSA c/us certification
- 2-step & E-stop push buttons
- Transmitter protection NEMA type 4 (IP65)

Crane Components



- Top running and under running
- Rotating axle end trucks
- Fabricated or tubular framing
- Bolted connection plates

EZ-LIFT MANUAL CHAIN PRODUCTS & R&M GENUINE REPLACEMENT PARTS®

RM Series II 1/4 - 10 Ton



- Grade 80 alloy steel load chain with galvanized finish

RLP Premium 3/4 - 6 Ton



RL Manual 1/4 - 3 Ton



RBC Beam Clamp 1 - 5 Ton



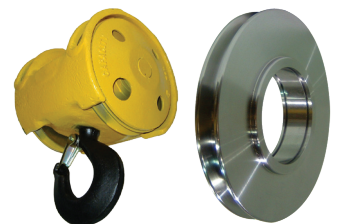
RPT Push Trolley 1/4 - 5 Ton



RPTC Hand Geared Trolley 1 - 10 Ton



R&M Genuine Replacement Parts®



- Extend the life of your equipment
- Protect your warranty

R&M Materials Handling, Inc. has over 85 years of experience in the overhead material handling industry. Our products and services lead the industry in innovation, performance and reliability. R&M Master Distributors® are located throughout the Americas. For your nearest R&M Master Distributor®, the most current pricing, Technical Guides, drawings and other product information visit our web site at www.rmhoist.com. R&M Materials Handling, Inc. may alter or amend the technical specifications identified herein at any time with or without notice.