

# Product Parts Information

---



## Quantum Electric Chain Hoist QCH Series (1/8 to 5 ton)



**Save These Instructions**

---

Only allow **Ingersoll Rand** trained technicians to perform maintenance on this product. For additional information contact **Ingersoll Rand** factory or nearest Distributor. For additional supporting documentation refer to **Table 1 'Product Manuals'**. Manuals can be downloaded from [www.ingersollrandproducts.com](http://www.ingersollrandproducts.com)

The use of other than genuine **Ingersoll Rand** replacement parts may result in safety hazards, decreased performance and increased maintenance and will invalidate all warranties.

The original language of this manual is English. Other languages are translations of the original instructions. Refer all communications to the nearest **Ingersoll Rand** Office or Distributor.

**Table 1: Product Manuals**

Publication	Part/Document Number	Publication	Part/Document Number
Product Safety Information Manual	16586075	Product Information Manual	04585147
Product Maintenance Information Manual	16586737		

## TABLE OF CONTENTS

Description	Page No
Parts Ordering Information . . . . .	3
Hoist Exploded Diagram - QCH50 (Dwg. MHP3223) . . . . .	4
Hoist Parts List - QCH50 . . . . .	5
Hoist Exploded Diagram - QCH50 (CONT'D) (Dwg. MHP3224) . . . . .	6
Hoist Parts List - QCH50 (CONT'D) . . . . .	7
Hoist Exploded Diagram - QCH100 (Dwg. MHP3225) . . . . .	8
Hoist Parts List - QCH100 . . . . .	9
Hoist Exploded Diagram - QCH100 (Dwg. MHP3226) . . . . .	10
Hoist Parts List - QCH100 (CONT'D) . . . . .	11
Hoist Exploded Diagram - QCH200/QCH300/QCH500 (Dwg. MHP3227) . . . . .	12
Hoist Parts List - QCH200/QCH300/QCH500 . . . . .	13
Hoist Parts List- QCH200/QCH300/QCH500 (CONT'D) . . . . .	14
Hoist Exploded Diagram - QCH200/QCH300/QCH500 (Dwg. MHP3228) . . . . .	15
Hoist Parts List- QCH200/QCH300/QCH500 (CONT'D) . . . . .	16
Hoist Exploded Diagram - QCH50/ QCH200/ QCH200/QCH300/QCH500 (AC Brakes) (Dwg. MHP3229) . . . . .	17
Hoist Parts List - QCH50/ QCH200/ QCH200/QCH300/QCH500 (AC Brakes) . . . . .	18
Hoist Parts List - QCH50/ QCH200/ QCH200/QCH300/QCH500 (AC Brakes) (CONT'D) . . . . .	19

---

## PARTS ORDERING INFORMATION

---

These products are designed and constructed to provide long, trouble-free service. In time it may be necessary to order and install new parts to replace those that have been subjected to wear.

For your convenience and future reference it is recommended that the following information be recorded.

**Model Number :** \_\_\_\_\_

**Serial Number :** \_\_\_\_\_

**Date Purchased :** \_\_\_\_\_

When ordering replacement parts, please specify the following:

1. Complete model number and serial number as it appears on the data (name) plate.
2. Part number(s) and part description as shown in this manual.
3. Quantity required.

The data (name) plate is located on the product.

### NOTICE

- Continuing improvement and advancement of design may cause changes to this equipment which are not included in this manual. Manuals are periodically revised to incorporate changes. Always check the manual edition number on the front cover for the latest issue.
- Sections of this manual may not apply to your product.
- Using other than genuine Ingersoll Rand replacement parts will invalidate the warranty.

### ■ Return Goods Policy

**Ingersoll Rand** will not accept any returned goods for warranty or service work unless prior arrangements have been made and written authorization has been provided from the location where the goods were purchased.

Products which have been modified without **Ingersoll Rand** approval, mishandled or overloaded will not be repaired or replaced under warranty. A printed copy of the warranty which applies to this product is provided inside the Product Information Manual.

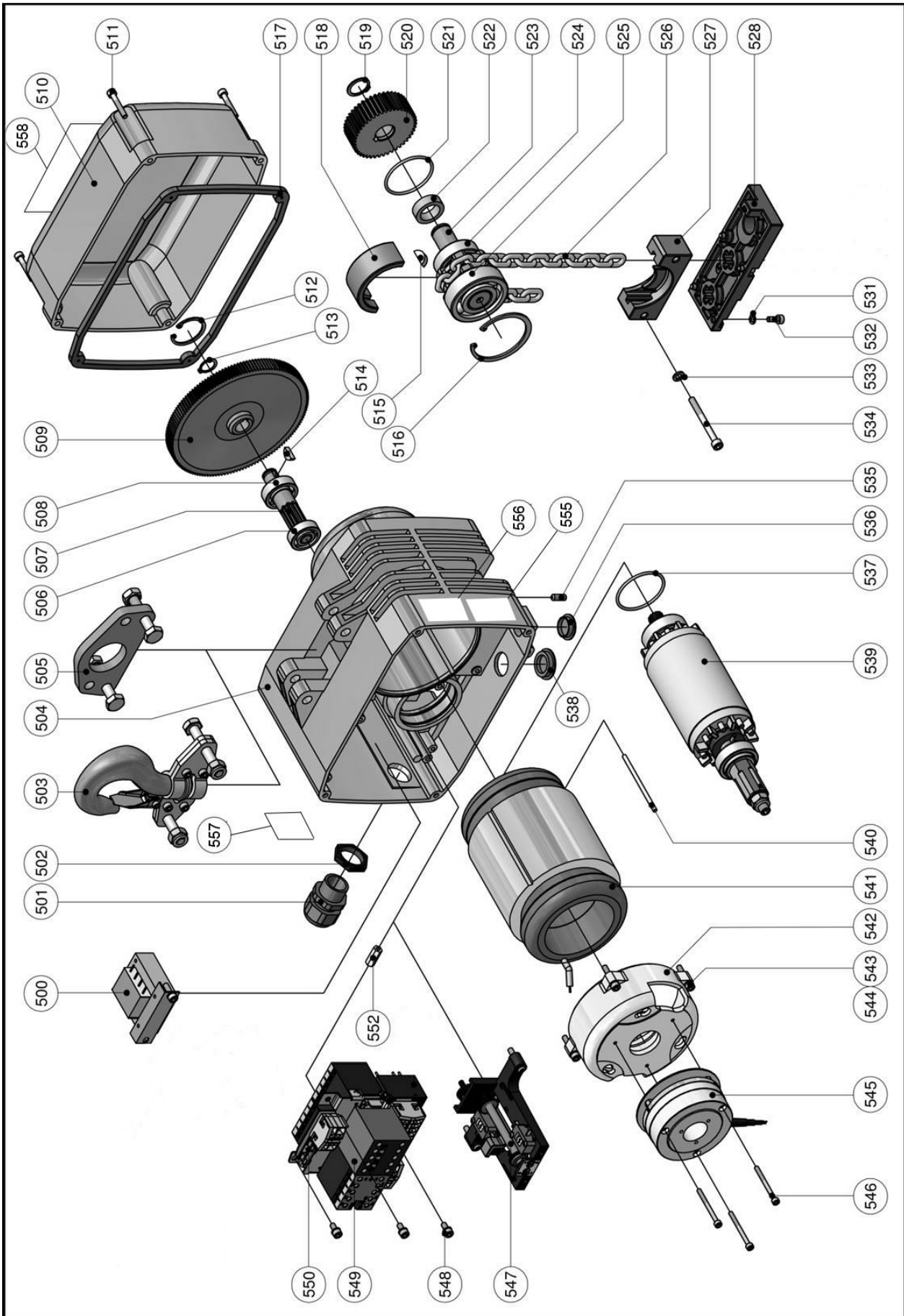
### ■ Disposal



When the life of the product has expired, it is recommended that it be disassembled, degreased and parts separated as to materials so that they may be recycled.

For additional information contact: [www.ingersollrandproducts.com](http://www.ingersollrandproducts.com)

# HOIST EXPLODED DIAGRAM - QCH50



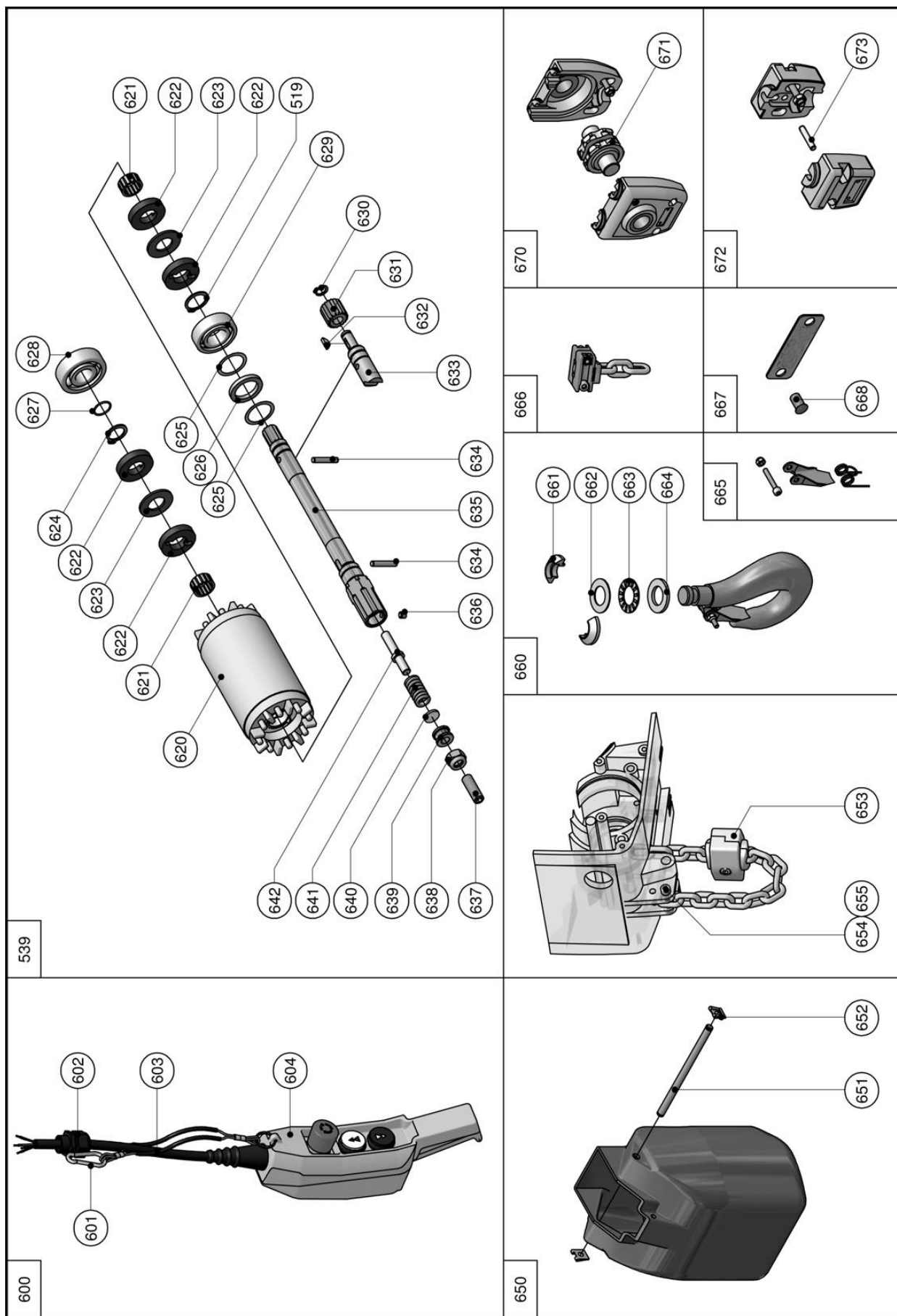
(Dwg. MHP3223)

## HOIST PARTS LIST - QCH50

Item No.	Description	Part Numbers	Item No.	Description	Part Numbers	
500	Transformer 230V//42V	9056.4500.4	535	Screw	9030.2013	
	Transformer, 380V//42V	71285357	536	Plug	9055.3512	
	Transformer 460V//42V	9056.4522.4	537	O-ring	9035.0015	
	Transformer, 575V//42V	712968941	538	Plug	9055.3513	
	Transformer, 230V//110V	9056.4523.4	539	Rotor Assy, 1 speed, Ø61.4 x 50, 8 m/min	9400.3141.3	
	Transformer, 460V//110V	9056.4525.4		Rotor Assy, 2 speed, Ø69.4 x 100, 8 m/min	9400.3144.3	
	Transformer, 575V//110V	71273536		Rotor Assy, 2 speed, Ø69.4 x 100, 12.5m/min	9400.3145.3	
501	Cable Gland M25	9055.3103		Rotor Assy, 2 spd, Ø69.4 x 100, 16m/min	9400.3151.3	
502	Gland Nut M25	9055.4013	540	Dowel	9230.3097.4	
503	Hook Suspension	IR9401.3007.3	541	Stator 1 Speed 3x230-460V 60Hz	9400.3141.3	
504	Housing	9400.3000.0		Stator 1 Speed 3x575V 60Hz	9400.3144.3	
505	Eye Bolt Suspension	9400.3055.4		Stator 2 Speed 3x230V 60Hz	9400.3145.3	
506	Bearing	9038.0015		Stator 2 Speed 3x460V 60Hz	9400.3151.3	
507	Pinion	9400.3043.4	542	Cover	9400.3147.2	
508	Bearing	9038.0016	543	Screw	9030.0265	
509	Gear Ø149 z=142	IR9400.3074.3	544	Washer	9031.3902	
	Gear Ø143 z=136	IR9400.3075.3		DC Brake 20 Nm 200-240V	9050.4056	
	Gear Ø133 z=127	IR9400.3076.3		DC Brake 20 Nm 360-420V	9050.4057	
510	Cover	9400.3001.2		DC Brake 20 Nm 440-480V	9050.4058	
511	Screw Gear Cover	9030.0267	545	DC Brake 20 Nm 500-575V	9050.4059	
	Screw Electrical Cover	9030.3254		546	Screw	00030.9287
512	Snap Ring	9031.2214		547	Limit Switch Assembly	9401.3015.3
513	Snap Ring	71277792			Limit Switch Assembly with Auxiliary Contacts	9401.3018.3
514	Key	9036.0605	548	Screw	0030.9229	
515	Key	9036.0600	549	Control Assembly, Single Speed, 42V, 100-480V	9402.1505.2	
516	Snap Ring	71278790		Control Assembly, Single Speed, 42V, 500-690V	9402.1501.2	
517	Gasket	9400.3002.3		Control Assembly, Dual Speed, 42V, 100-480V	9402.1605.2	
518	Chain Guide Top	9401.3004.4		Control Assembly, Dual Speed, 42V, 500-690V	9402.1601.2	
519	Snap Ring	71277917		Control Assembly, Single Speed, 110V, 100-480V	IR9402.1504.2	
520	Gear	9400.3073.4		Control Assembly, Single Speed, 110V, 500-690V	IR9402.1506.2	
521	O-ring	71277719		Control Assembly, Dual Speed, 110V, 100-480V	IR9402.1604.2	
522	Spacer	9400.3029.4	Control Assembly, Dual Speed, 110V, 500-690V	IR9402.1606.2		
523	Pocket Wheel	9401.3037.2	550	Fuse	9052.0012	
524	Bearing	9038.0017	552	Screw	9058.0608	
525	Bearing	71278048	558	Label - Capacity 1/8 Ton	80179088	
526	Chain	71268437		Label - Capacity 1/4 Ton	80179096	
527	Chain Guide Bottom	9401.3003.4		Label - Capacity 1/2 Ton	80179112	
528	Chain Guide Plate	9400.3054.3		Label - Capacity 1 Ton	80179120	
529	Washer	71278717	556	Label - Warning	71125751	
531	Washer	71277685	557	Label - Model Number	04612230	
532	Screw	9030.0281	555	Label - Warning	MTK-147	
533	Washer	71277685	*	Bullard Hook	1058416	
534	Screw	9030.0281				

\* Optional

# HOIST EXPLODED DIAGRAM - QCH50 (CONT'D)



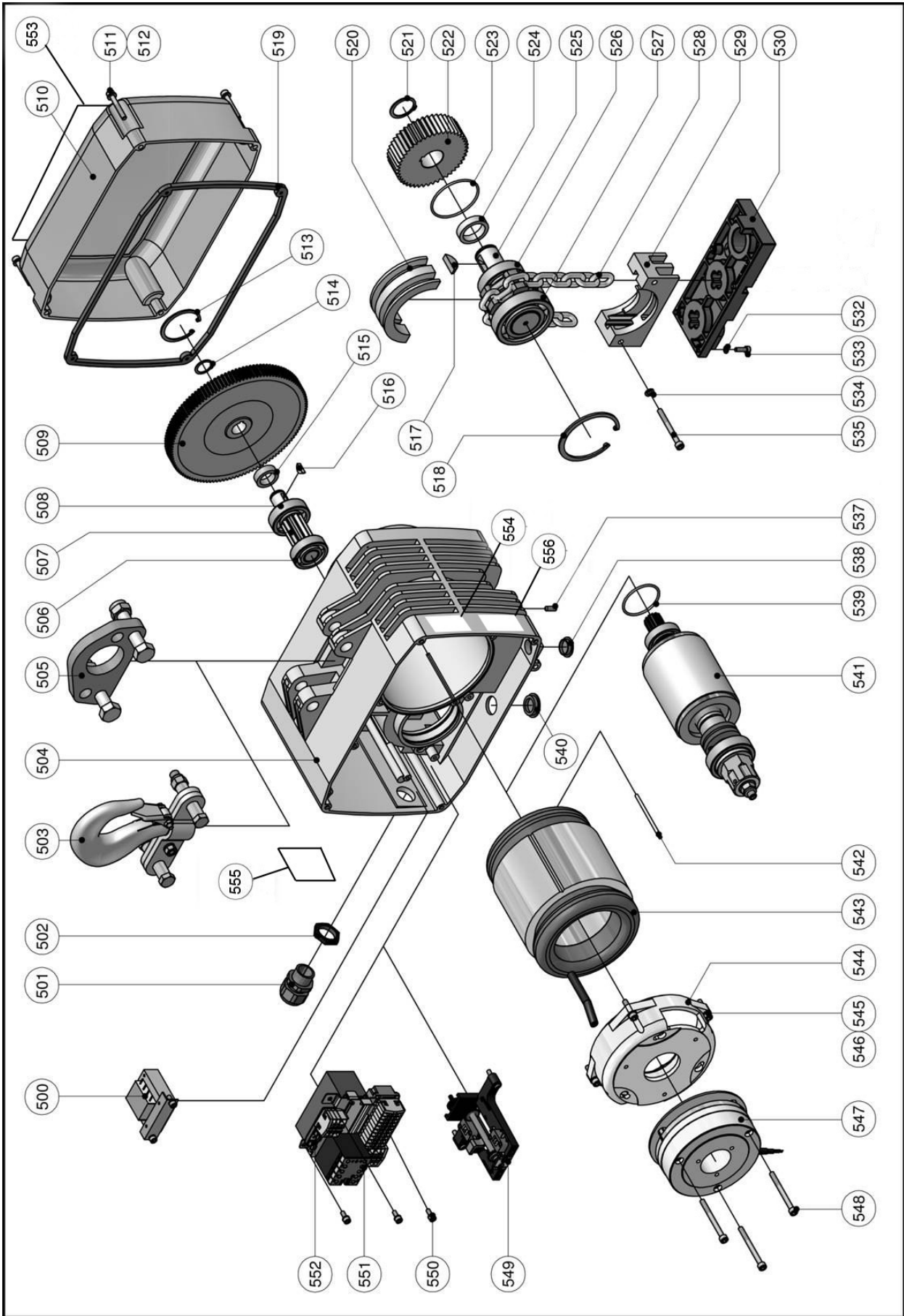
(Dwg. MHP3224)



**HOIST PARTS LIST - QCH50 (CONT'D)**

Item No.	Description	Part Numbers	Item No.	Description	Part Numbers
600	Pendant 2 Button+Emergency Stop - 6 ft Cable	IR9290.1097.3	640	Disc	9400.3142.4
	Pendant 2 Button+Emergency Stop - 11 ft Cable	IR9290.1095.3	641	Spring	9034.1009
	Pendant 2 Button+Emergency Stop - 16 ft Cable	IR9290.1098.3	642	Spring Guide	9400.3143.4
	Pendant 2 Button+Emergency Stop - 21 ft Cable	IR9290.1096.3	650	Chain Bucket - 20 ft Capacity	9401.3010.1
601	Clip	A9031.8004		Chain Bucket - 40 ft Capacity	9401.3011.1
602	Clamp	A9039.1103		Chain Bucket - 52 ft Capacity	9400.3118.3
603	Cable	A9055.0110		Chain Bucket - 65 ft Capacity	9400.3118.3
604	Pendant 2 Button+Emergency Stop - w/o Cable	IR9290.1084.3		Chain Bucket - 98 ft Capacity	9400.3118.3
620	Rotor 3 Phase 1 Speed	9400.3030.3	651	Pin	9215.3030.4
	Rotor 3 Phase 2 Speed	9400.3032.3	652	Keeper	71307185
621	Bearing	9038.0259	653	Chain Stopper	IR9216.3021.3
622	Friction Plate	9400.3046.4	654	Screw	71278139
623	Friction Disc	9400.3047.4	655	Washer	71278717
624	Snap Ring	9031.2011	660	Chain Anchor	IR9400.3015.4
625	Spacer	9210.3131.4	661	Half Moon Keeper	10598316
626	Felt Washer	9210.3075.4	662	Thrust Race	10598340
627	O-ring	9035.0023	663	Thrust Bearing	10598324
628	Bearing	9038.0014	664	Thrust Race	10598332
629	Bearing	71278709	665	Hook - Latch Kit	71275275
630	Snap Ring	0031.1006	667	Nameplate - 125 kg	71278535
631	Pinion 50 fpm	IR9400.3071.4		Nameplate - 250 kg	71278550
	Pinion 80 fpm	IR9400.3072.4		Nameplate - 500 kg	71278592
632	Key	9036.0604		Nameplate - 1000 kg	71278715
633	Shaft HD/XD (w/o Pinion)	9400.3070.3	668	Rivet	71278501
634	Pin	9031.5855	670	Bottom Block Assembly QCH50-2	10598282
635	Shaft NS/ND	9400.3020.3	671	Idler Sheave	71278444
636	Set Screw	9030.2011	672	Bottom Block Assembly QCH50-1	IR9216.3131.3
637	Adjusting Screw	9030.2014	673	Pin	71278204
638	Locknut	9031.1278	674	Tag - Warning	04612776
639	Spring Cap, Threaded	9400.3137.4			

# HOIST EXPLODED DIAGRAM - QCH100



(Dwg. MHP3225)

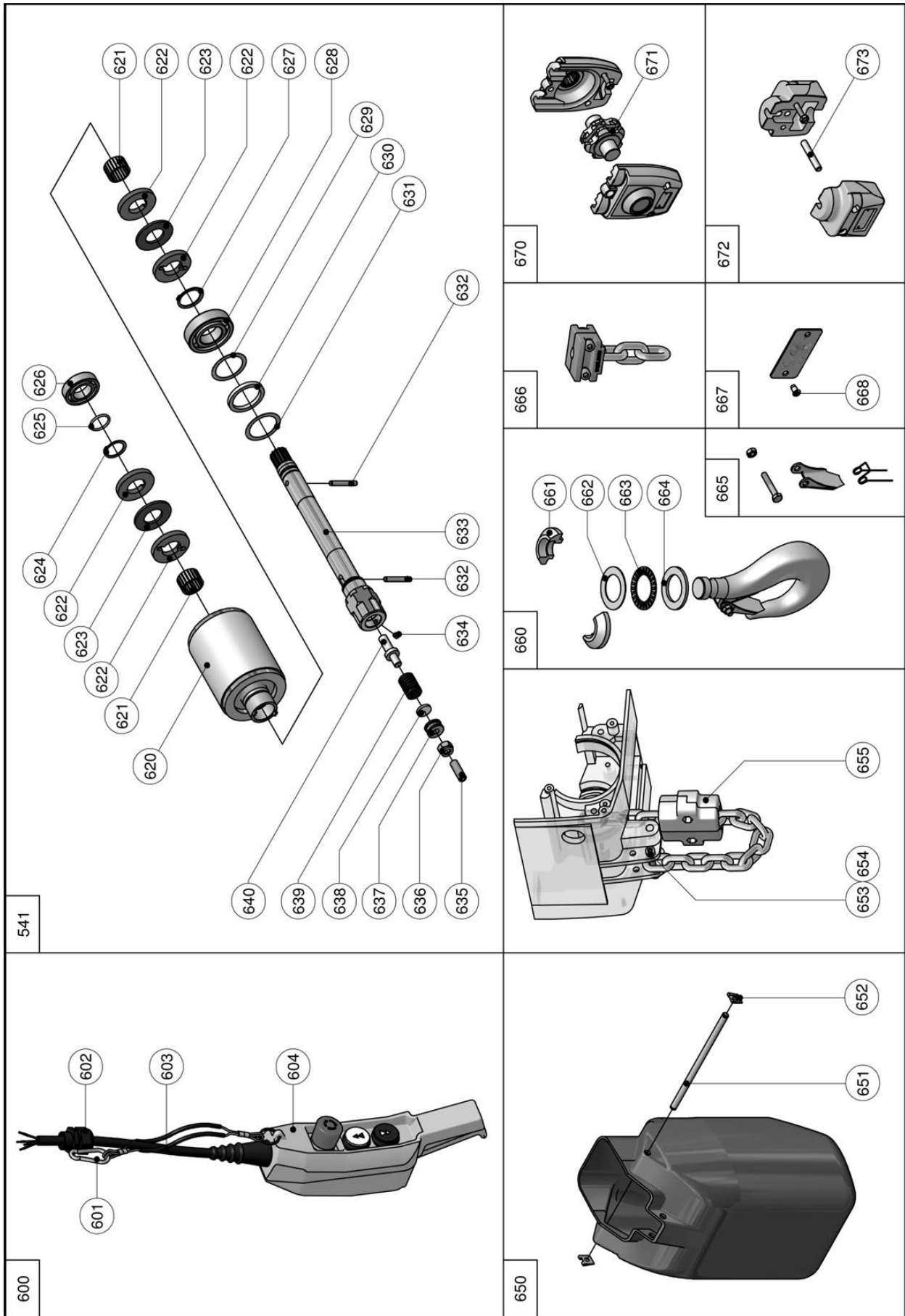


## HOIST PARTS LIST - QCH100

Item No.	Description	Part Numbers	Item No.	Description	Part Numbers
500	Transformer 230V//42V	9056.4500.4	537	Stator Locking Screw	9030.2013
	Transformer, 380V//42V	71285357	538	Plug	9055.3512
	Transformer 460V//42V	9056.4522.4	539	O-ring	71279459
	Transformer, 575V//42V	712968941	540	Plug	9055.3513
	Transformer, 230V//110V	9056.4523.4	541	Rotor with Shaft Compl. 1 speed 8m/min	9405.3239.3
	Transformer, 460V//110V	9056.4525.4		Rotor with Shaft Compl. 2 speed 8/2 m/min	9405.3240.3
	Transformer, 575V//110V	71273536		Rotor with Shaft Compl. 2 speed 16/4 m/min	9405.3241.3
501	Cable Gland M25	9055.3103	542	Dowel	71280150
502	Gland Nut M25	9055.4013	543	Stator 1 Speed 3x230-460V 60Hz	9407.0202.3
503	Hook Suspension	9405.3051.3		Stator 1 Speed 3x575V 60Hz	9407.0201.3
504	Housing	9405.3000.0		Stator 2 Speed 3x230V 60Hz 32/8 fpm	9407.0501.3
505	Eye Bolt Suspension	9405.3039.4		Stator 2 Speed 3x460V 60Hz 32/8 fpm	9407.0500.3
506	Bearing	9038.0018		Stator 2 Speed 3x575V 60Hz 32/8 fpm	9407.0503.3
507	Pinion	9405.3025.3		Stator 2 Speed 3x230V 60Hz 64/16 fpm	9407.0401.3
508	Bearing	9038.0021		Stator 2 Speed 3x460V 60Hz 64/16 fpm	9407.0400.3
509	Gear Ø191 z=129	9405.3022.3		Stator 2 Speed 3x575V 60Hz 64/16 fpm	9407.0403.3
510	Cover	9405.3001.2		544	Cover
511	Screw Gear Cover	0030.3492	545	Screw	9030.0276
	Screw Electrical Cover	9030.0279	546	Washer	9031.3903
512	Washer	0031.0577	547	DC Brake 20 Nm 200-240V	9050.4063
513	Snap Ring	9031.2206		DC Brake 20 Nm 360-420V	9050.4065
514	Snap Ring	71277917		DC Brake 20 Nm 440-480V	9050.4064
515	Spacer	9400.3029.4		DC Brake 20 Nm 500-575	9050.4066
516	Key	9036.0605	548	Screw	9030.0011
517	Key	71279608	549	Limit Switch Assembly	9401.3015.3
518	Snap Ring	71279624		Limit Switch Assembly with Auxiliary Contacts	9401.3018.3
519	Gasket	9405.3002.3	550	Cap Screw	0030.9229
520	Chain Guide Top	9405.3011.3	551	Control Assembly, Single Speed, 42V, 100-480V	9402.1505.2
521	Snap Ring	71279541		Control Assembly, Single Speed, 42V, 500-690V	9402.1501.2
522	Gear Ø99.5 Z=46	9405.3023.4		Control Assembly, Dual Speed, 42V, 100-480V	9402.1605.2
523	O-ring	71279582		Control Assembly, Dual Speed, 42V, 500-690V	9402.1601.2
524	Spacer	9405.3032.4		Control Assembly, Single Speed, 110V, 100-480V	IR9402.1504.2
525	Pocket Wheel	9405.3028.3		Control Assembly, Single Speed, 110V, 500-690V	IR9402.1506.2
526	Bearing	71279590		Control Assembly, Dual Speed, 110V, 100-480V	IR9402.1604.2
527	Bearing	71279616		Control Assembly, Dual Speed, 110V, 500-690V	IR9402.1606.2
528	Chain	71268445		552	Fuse
529	Chain Guide Bottom	9405.3012.3	553	Label - Capacity 1 Ton	45500956
530	Chain Guide Plate	9405.3020.3		Label - Capacity 2 Ton	45500972
532	Washer	71278717	554	Label - Warning	71125751
533	Screw	71278485	555	Label - Model Number	04612230
534	Washer	9031.3903	556	Label - Warning	MTK-147
535	Screw	9030.0283	*	Bullard Hook	382-36071

\* Optional

# HOIST EXPLODED DIAGRAM - QCH100

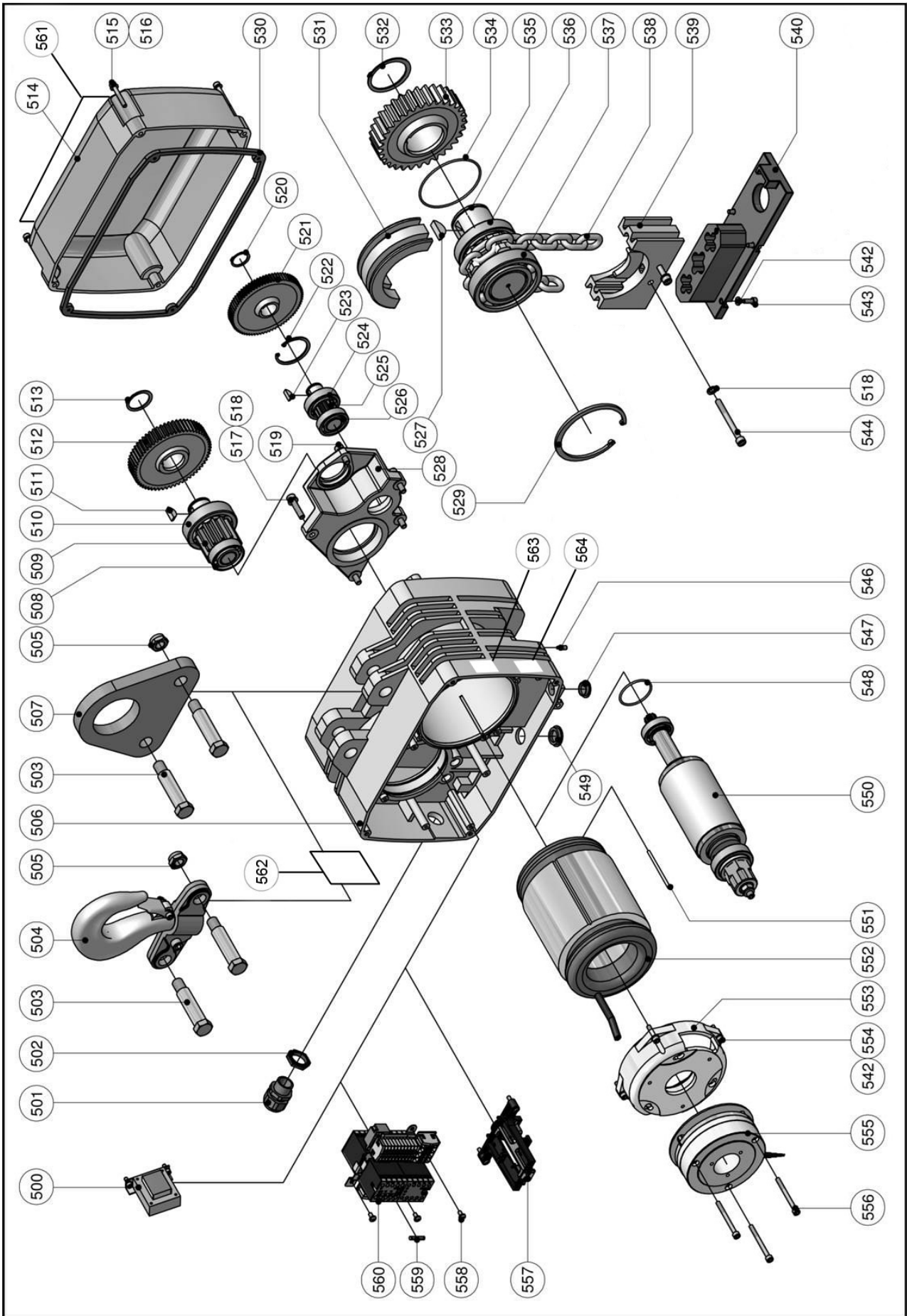


(Dwg. MHP3226)

## HOIST PARTS LIST - QCH100 (CONT'D)

Item No.	Description	Part Numbers	Item No.	Description	Part Numbers
600	Pendant 2 Button+Emergency Stop - 6 ft Cable	IR9290.1086.3	637	Threaded Spring Cap	9405.3228.4
	Pendant 2 Button+Emergency Stop - 11 ft Cable	IR9290.1095.3	638	Disc, Ø 19X3	9405.3230.4
	Pendant 2 Button+Emergency Stop - 16 ft Cable	IR9290.1098.3	639	Spring	9034.1010
	Pendant 2 Button+Emergency Stop - 21 ft Cable	IR9290.1096.3	640	Spring Guide	9405.3231.4
601	Clamp	A9039.1103	650	Chain Bucket - 33 ft Capacity	9405.3044.1
602	Cable Gland M20	9055.3102		Chain Bucket - 66 ft Capacity	9403.3179.3
603	Cable	A9055.0110		Chain Bucket - 116 ft Capacity	9403.3179.3
604	Pendant 2 Button+Emergency Stop - w/o Cable	IR9290.1084.3	651	Pin	9225.3030.4
620	Rotor 3 Phase 1 speed 32 fpm	9405.3135.3	652	Keeper	71307185
	Rotor 3 Phase 2 speed 32/8 fpm	9405.3036.3	653	Screw	9030.0280
	Rotor 3 Phase 2 speed 64/16 fpm	9405.3037.3		Nut	71277842
621	Bearing	9038.0261	654	Chain Stopper	A9225.3021.3
622	Friction Plate	9405.3021.4	660	Hook Assembly	80157084
623	Friction Disc	9405.3013.4	661	Half Moon Keeper	80157100
624	Snap Ring	71280051	662	Thrust Race	80157126
625	O-ring	9035.0024	663	Thrust Bearing	80157092
626	Bearing	71279947	664	Thrust Race	0038.3128
627	Snap Ring	71280051	665	Chain Anchor	9405.3003.3
628	Bearing	71279590	666	Hook Latch Kit	71275655
629	Spacer	9405.3251.4	667	Nameplate - .5t	71279830
630	Felt Washer	9221.3177.4		Nameplate - 1t	71279780
631	Spacer	9405.3043.4		Nameplate - 2t	71279798
632	Pin	9031.5857	668	Rivet	71278501
633	Shaft Ø 37 X 350, -N/NF	9405.3229.2	670	Bottom Block Assembly	A9225.3020.2
	Shaft Ø37 X 351, -SF	9408.3143.3	671	Idler Sheave	9225.3041.4
634	Set Screw	9030.2011	672	Bottom Block Assembly	A9225.3019.2
635	Adjusting Screw	9030.2014	673	Pin	71279871
636	Locking Nut	0031.0009	674	Tag - Warning	04612776

# HOIST EXPLODED DIAGRAM - QCH200/QCH300/QCH500



(Dwg. MHP3227)

**HOIST PARTS LIST- QCH200/QCH300/QCH500**

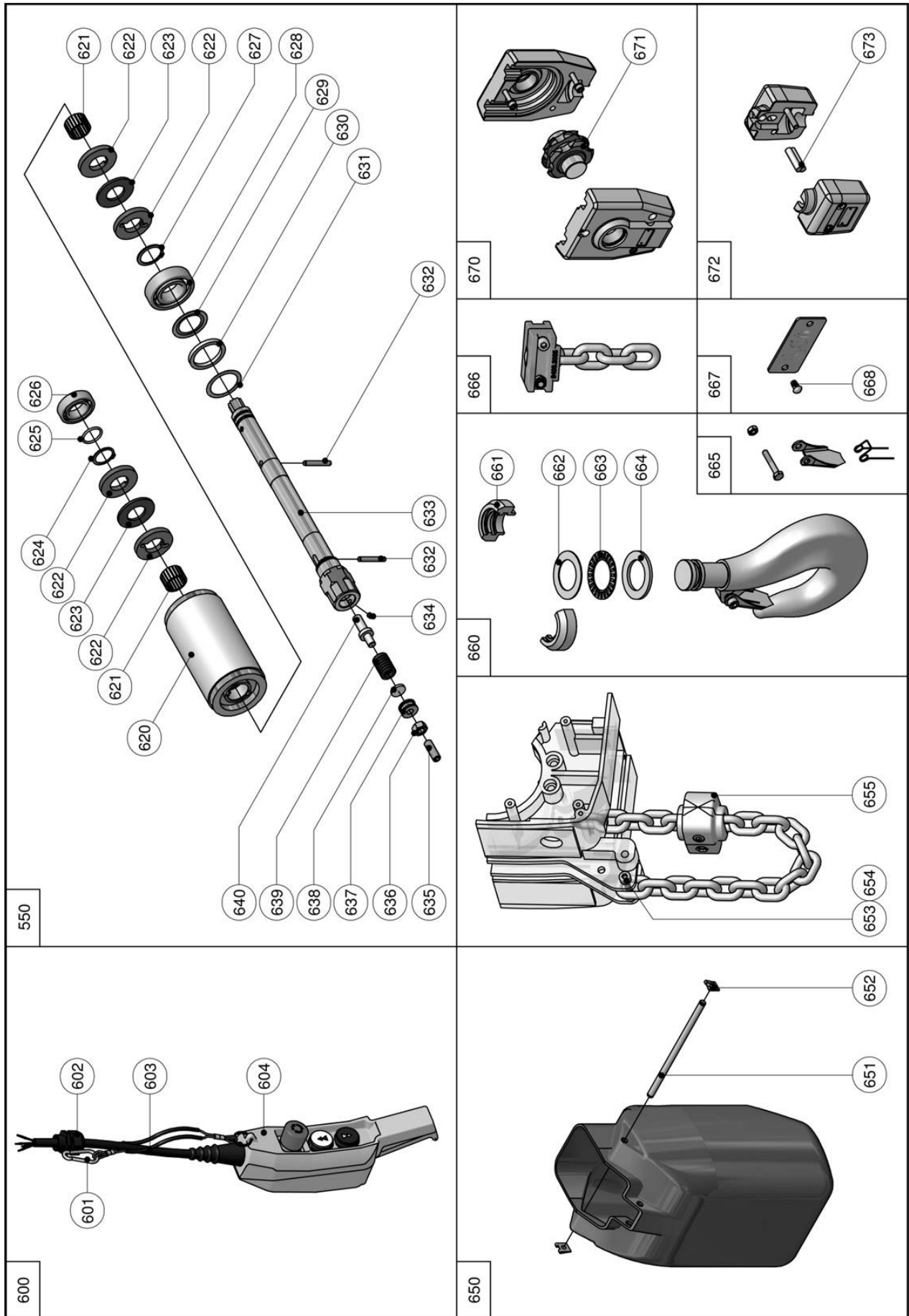
Item No.	Description	Part Numbers		
		QCH200	QCH300	QCH500
500	Transformer 230/460/Prim - 42VSec	9056.4044		
	Transformer 575V Prim - 42VSec	9056.4045		
	Transformer 230/460/Prim - 110VSec	9056.4049		
	Transformer 575V Prim - 110VSec	9056.4050		
501	Cable Gland M25	9055.3103		
502	Gland Nut M25	9055.4013		
503	Screw	9408.3015.4		
504	Hook Suspension	9408.3042.3		
505	Nut	9031.1279		
506	Housing	9408.3000.0		
507	Eye Bolt Suspension	9408.3019.3		
508	Bearing	71280093		
509	Pinion	9408.3025.4		
510	Bearing	9038.0019		
511	Key	71278691		
512	Gear Ø116 z=78	9408.3023.3		
513	Snap Ring	9031.2206		
514	Cover	9408.3001.2		
515	Screw Gear Cover	9030.0279		
	Screw Electrical Cover	9030.3261		
516	Washer	9031.3704		
517	Screw	71310940		
518	Washer	71277883		
519	Screw	9030.0287		
520	Snap Ring	71280366		
521	Gear	9408.3026.3		
522	Snap Ring	9031.2206		
523	Key	71280390		
524	Bearing	9038.0022		
525	Pinion	9408.3027.4		---
	Pinion	---	9408.3028.4	
526	Bearing	71280416		
527	Key	71280204		
528	Cover	9408.3002.1		
529	Snap Ring	71280267		
530	Gasket	9408.3003.3		
531	Chain Guide Top	9408.3011.3	9408.3013.3	
532	Snap Ring	71280218		
533	Gear	9408.3029.3	9408.3030.3	
534	O-ring	9035.0017		
535	Pocket Wheel	9408.3031.2	9408.3032.2	
536	Bearing	71280234		
537	Bearing	9038.0020		



**HOIST PARTS LIST- QCH200/QCH300/QCH500 (CONT'D)**

Item No.	Description	Part Numbers		
		QCH200	QCH300	QCH500
538	Chain	71268452	71268460	
539	Chain Guide Bottom	9408.3012.3	---	9408.3014.3
540	Chain Guide Plate	9408.3016.2		
542	Washer	9031.3903		
543	Screw	71280119		
544	Screw	9030.0309		
546	Screw	9030.2013		
547	Plug	9055.3512		
548	O-ring	71279459		
549	Plug	9055.3513		
550	Rotor Assy, 1 spd, Ø80 x 90, Z=10, -N	9408.3145.3		
	Rotor Assy, 2 spd, Ø80 x 130, Z=10, -NF	9408.3146.3		
	Rotor Assy, 2 spd, Ø80 x 130, Z=15, -SF	9408.3147.3		
551	Dowel	71280150		
552	Stator, 3Ph 230/400V 50Hz, 2p, -N	9407.0100.3		
	Stator, 3Ph 400V 50Hz, 8/2p, -NF/-SF	9407.0400.3		
	Stator, 3Ph 230V 50Hz, 8/2p, -NF/-SF	9407.0402.3		
553	Cover	9405.3232.2		
554	Screw	9030.0276		
555	DC Brake 20 Nm 200-240V	9050.4063		
	DC Brake 20 Nm 360-420V	9050.4065		
	DC Brake 20 Nm 440-480V	9050.4064		
	DC Brake 20 Nm 500-575	9050.4066		
556	Screw	9030.0011		
557	Limit Switch Assembly	9401.3015.3		
	Limit Switch Assembly with Auxiliary Contacts	9401.3018.3		
558	Screw	0030.3468		
559	Fuse	71275259		
560	Control Assembly, 1 Speed, NA 100-480/42V	9402.1500.2		
	Control Assembly, 1 Speed, NA 500-690V/42V	9402.1501.2		
	Control Assembly, 2 Speed, NA 100-480/42V	9402.1600.2		
	Control Assembly, 2 Speed, NA 500-690V/42V	9402.1601.2		
561	Label - Capacity 2 Ton	---	45500998	---
	Label - Capacity 3 Ton	45501004	---	---
	Label - Capacity 4 Ton	---	45501012	---
	Label - Capacity 5 Ton	---	---	45501020
562	Label - Warning	71125751		
563	Label - Model Number	04612230		
564	Label - Warning	MTK-147		

# HOIST EXPLODED DIAGRAM - QCH200/QCH300/QCH500

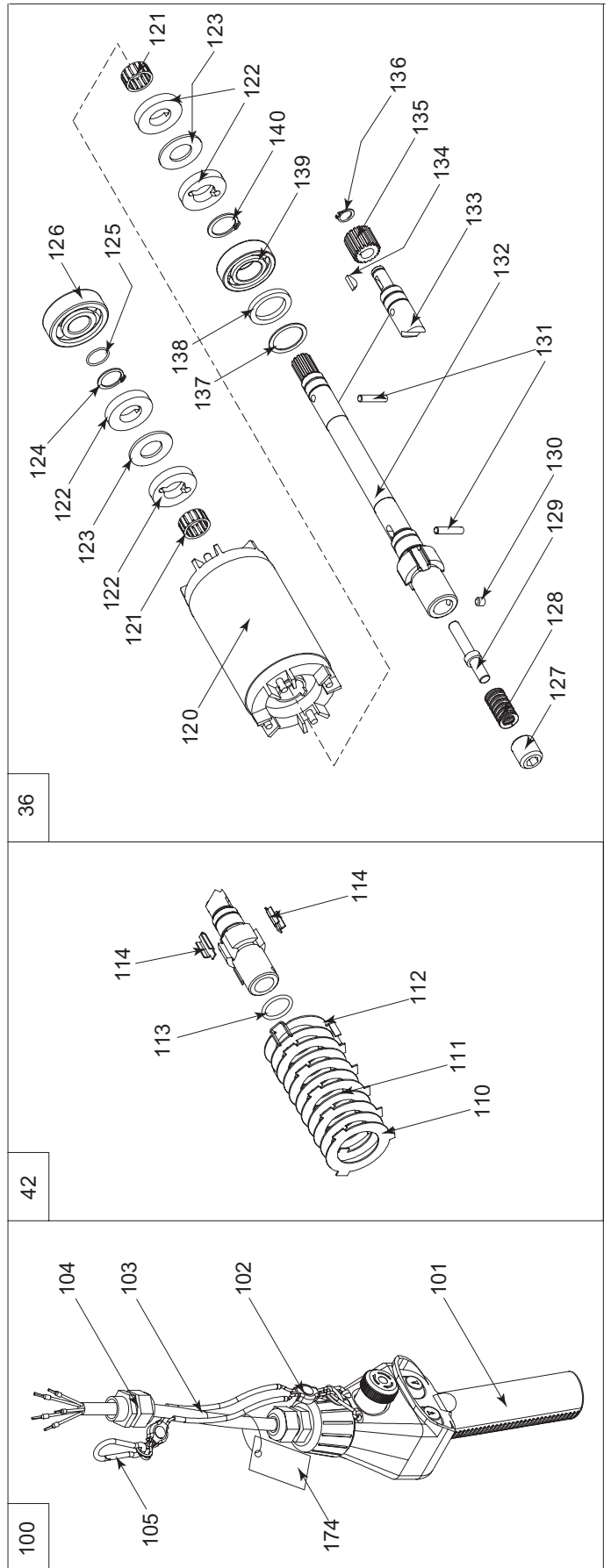
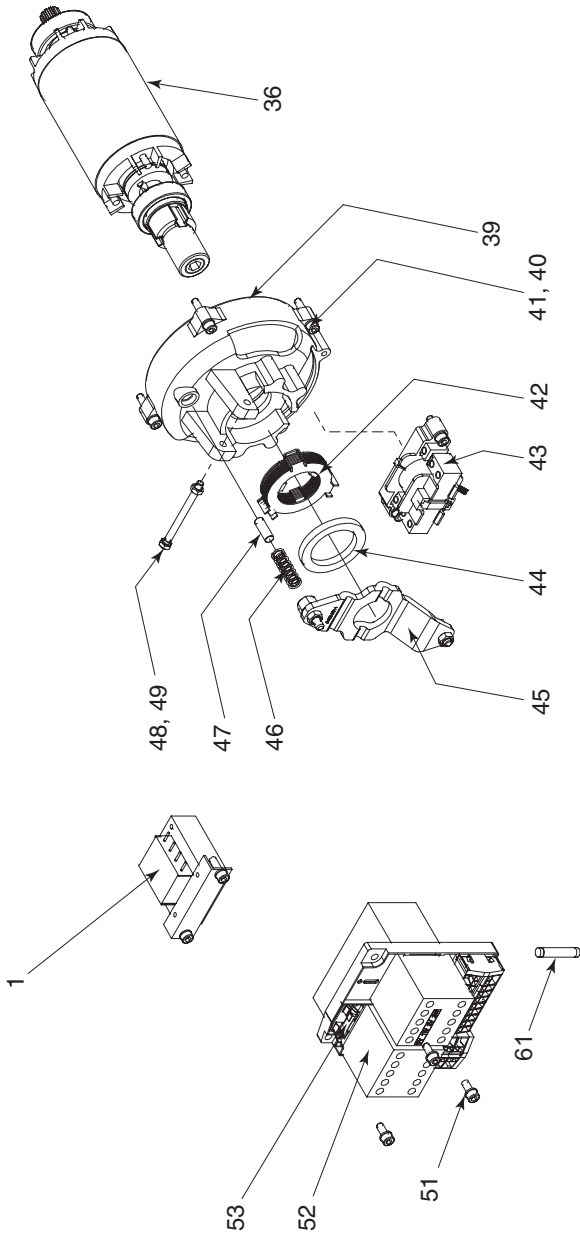


(Dwg. MHP3228)

**HOIST PARTS LIST- QCH200/QCH300/QCH500 (CONT'D)**

Item No.	Description	Part Numbers	Item No.	Description	Part Numbers
600	Pendant 2 Button+Emergency Stop - 6 ft Cable	IR9290.1086.3	638	Disc	9405.3230.4
	Pendant 2 Button+Emergency Stop - 11 ft Cable	IR9290.1095.3	639	Spring	9034.1010
	Pendant 2 Button+Emergency Stop - 16 ft Cable	IR9290.1098.3	640	Spring Guide	9405.3231.4
	Pendant 2 Button+Emergency Stop - 21 ft Cable	IR9290.1096.3	650	Chain Bucket - 10 ft Capacity	9405.3044.1
601	Clip	A9031.8004		Chain Bucket - 26 ft Capacity	9405.3045.1
602	Cable Gland M20	9055.3102		Chain Bucket - 82 ft Capacity	9405.3046.1
603	Cable	A9055.0110	651	Pin	9225.3030.4
604	Pendant 2 Button+Emergency Stop - w/o Cable	IR9290.1084.3	652	Keeper	71307185
620	Rotor 3 Phase 1 Speed	9405.3035.3	653	Screw	9030.0291
	Rotor 3 Phase 2 Speed	9405.3037.3	660	Hook Assembly	9235.3110.3
621	Bearing	9038.0261	661	Half Moon Keeper	9235.3107.4
622	Friction Plate	9405.3021.4	662	Thrust Race	80157126
623	Friction Disc	9405.3013.4	663	Thrust Bearing	9038.0252
624	Snap Ring	71280051	664	Thrust Race	9038.1750
625	O-ring	9035.0024	665	Hook Latch Kit	71275655
626	Bearing	71279947	666	Chain Anchor	9235.3111.3
627	Snap Ring	71279541	667	Nameplate - 200 kg	71279798
628	Bearing	71279590		Nameplate - 300 kg	71293773
629	Spacer/Washer	9405.3251.4		Nameplate - 400 kg	10556389
630	Felt Washer	9221.3177.4		Nameplate - 500 kg	04660239
631	Spacer	9405.3043.4	668	Rivet	71278501
632	Pin	9031.5857	670	Bottom Block Assembly QCH200-2	A9235.3104.1
633	Shaft, Ø37 x 350, -N/-NF	9408.3142.3		Bottom Block Assembly QCH300/500-2	A9235.3109.1
	Shaft, Ø37 x 351, -SF	9408.3143.3	671	Idler Sheave	9230.3059.4
634	Set Screw	9030.2011	672	Bottom Block Assembly QCH200/300/500-1	A9235.3105.3
635	Adjusting Set Screw	9030.2014		673	Pin
636	Locking Nut	0031.0009			
637	Threaded Spring Cap	9405.3228.4			

# HOIST EXPLODED DIAGRAM - QCH50/ QCH200/ QCH200/QCH300/QCH500 (AC Brakes)



(Dwg. MHP3229)

## HOIST PARTS LIST - QCH50/ QCH200/ QCH200/QCH300/QCH500 (AC Brakes)

Item No.	Description	Part Numbers				
		QCH50	QCH100	QCH200	QCH300	QCH500
1	Transformer 230/460/Prim - 42VSec	71296883				
	Transformer 575V Prim - 42VSec	71296891				
	Transformer 230/460/Prim - 110VSec	71273528				
	Transformer 575V Prim - 110VSec	71273536				
	Transformer 115/230/Prim - 42VSec	71276465	---	---	---	---
36	Rotor with Shaft Compl. 1 Speed	IR9401.3030.3	9405.3030.3	9408.3033.3		
	Rotor with Shaft Compl. 2 Speed	IR9401.3031.3	9405.3031.3	9408.3034.3		
	Rotor with Shaft Compl. 2 Speed without Pinion	IR9401.3032.3	---	---	---	---
	Rotor with Shaft Compl. 2 speed 64/16 fpm	---	9405.3029.3	---	---	---
39	Cover	9405.3005.2				
40	Screw	71277925	71279921			
41	Washer	71278717	71277685			
42	Brake Plates	9401.3040.4	9405.3034.4	9408.3039.4		
43	Brake Magnet 115/230V	IR9056.2203	IR9056.2203.4	IR9056.2203		
	Brake Magnet 230/460V	IR9056.2204.4				
	Brake Magnet 575V	IR9056.2205.4				
44	Brake Washer	9400.3077.4	9405.3033.4			
45	Lever	9401.3041.4	9405.3014.3			
46	Spring	71278451	9400.3042.4			
47	Dowel	71278097				
48	Screw	71280473	9030.0284			
49	Nut	71307227	71277842			
51	Screw	30.347	0030.3470	9030.3260		
52	Control 1 Speed 42V	IR9402.1200.2				
	Control 2 Speed 42V	IR9402.1300.2				
	Control 1 Speed 110V	IR9402.1203.2				
	Control 2 Speed 110V	IR9402.1303.2				
61	Fuse	---	--	71275259		
100	Pendant 2 Button+Emergency Stop - 6 ft Cable	IR9290.1097.3				
	Pendant 2 Button+Emergency Stop - 11 ft Cable	IR9290.1095.3				
	Pendant 2 Button+Emergency Stop - 16 ft Cable	IR9290.1098.3				
	Pendant 2 Button+Emergency Stop - 21 ft Cable	IR9290.1096.3				
101	Pendant 2 Button+Emergency Stop - w/o Cable	IR9290.1084.3				
102	Clamp	A9039.1103				
103	Cable	A9055.0110				
104	Cable Gland M20	9055.3102				
105	Clip	A9031.8004				
110	Brake Plate - Stationary	71278006	71279475			
111	Brake Plate - Rotating	71277990	71279483			
112	Brake Plate Keeper	9215.3149.4	9405.3018.4			
113	O-ring	9035.0024	9035.0021			
114	Disc Guide	9400.3080.4	9405.3017.4			
120	Rotor 3 Phase 1 Speed	9400.3030.3	9405.3035.3			
	Rotor 3 Phase 2 Speed	9400.3032.3	9405.3036.3			
	Rotor 3 Phase 2 Speed (64/16 fpm)	---	9405.3037.3	---	---	---
121	Bearing	9038.0259	9038.0261			
122	Friction Plate	9400.3046.4	9405.3021.4			
123	Friction Disc	9400.3047.4	9405.3013.4			



## HOIST PARTS LIST - QCH50/ QCH200/ QCH200/QCH300/QCH500 (AC Brakes) (CONT'D)

Item No.	Description	Part Numbers				
		QCH50	QCH100	QCH200	QCH300	QCH500
124	Snap Ring	31.1011		71280051		
125	O-ring	9035.0023		9035.0024		
126	Bearing	9038.0014		71279947		
127	Adjusting Screw	9030.201		9405.3019.4		
128	Spring	9034.1009		9034.1010		
129	Spring Guide	9400.3019.4		9405.3040.4		
130	Set Screw	9030.2011				
131	Pin	9031.5855		9031.5857		
132	Shaft NS/ND	9400.3020.3	9405.3042.3	9408.3036.3		
133	Shaft HD/XD (w/o Pinion)	9400.3070.3		---		
134	Key	9036.0604		---		
135	Pinion 50 fpm	IR9400.3071.4		---		
	Pinion 80 fpm	IR9400.3072.4		---		
136	Snap Ring	31.1006		---		
137	Spacer	9210.3131.4		9405.3043.4		
138	Felt Washer	9210.3075.4		9221.3177.4		
139	Bearing	71278709		71279590		
140	Snap Ring	71277917	71280051	71279541		
174	Tag - Warning	04612776				

