
OWNER'S MANUAL SUPPLEMENT

ELECTRIC CHAIN HOIST ED SERIES ED1050

1050 Lb. Capacity

Code, Lot and Serial Number

⚠ WARNING

This equipment should not be installed, operated or maintained by any person who has not read and understood all the contents of this manual. Failure to read and comply with the contents of this manual can result in serious bodily injury or death, and/or property damage.

HARRINGTON
HOISTS AND CRANES

IMPORTANT INFORMATION ON HOW TO USE THIS MANUAL

This OWNER'S MANUAL SUPPLEMENT is intended for use *in combination* with the “**Owner’s Manual for Electric Chain Hoist ED Series 125 through 525 Lb. Capacity**”. Refer to the Table of Contents below to determine the location(s) of information pertaining to your hoist. References to the “Owner’s Manual for Electric Chain Hoist ED Series 125 through 525 Lb. Capacity” will be designated by the use of the acronym “**EDOM**”.

Table of Contents

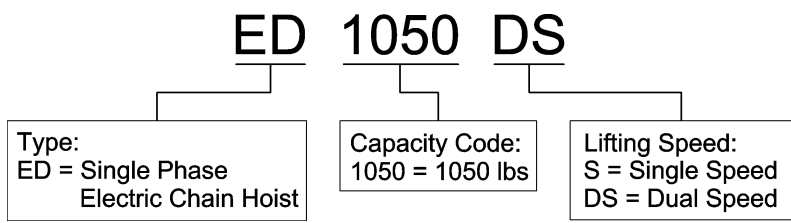
| Section | Page Number |
|--|--------------------|
| 1.0 Important Information and Warnings..... | EDOM |
| 1.1 Terms and Summary | EDOM |
| 1.2 Warning Tags and Labels | EDOM |
| 2.0 Technical Information..... | 4 |
| 2.1 Specifications | 4 |
| 2.2 Dimensions | 5 |
| 2.3 Part Names | 7 |
| 3.0 Pre-operational Procedures..... | .8 and EDOM13 |
| 3.1 Fill Gear Box with Oil | EDOM |
| 3.2 Chain | 8 |
| 3.3 Load Chain Lubrication | EDOM |
| 3.4 Chain Container | EDOM |
| 3.5 Mounting Location | EDOM |
| 3.6 Mounting the Hoist | 9 |
| 3.7 Electrical Connections | EDOM |
| 3.8 Pre-operational Checks and Trial Operation | EDOM |
| 4.0 Operation..... | EDOM |
| 4.1 Introduction | EDOM |
| 4.2 Shall's and Shall Not's for Operation | EDOM |

| Section | Page Number |
|--|--------------------|
| 4.3 Hoist Controls | EDOM |
| 4.4 Electric Chain Hoist with Trolley | EDOM |
| 5.0 Inspection | 10 and EDOM |
| 5.1 General | EDOM |
| 5.2 Inspection Classification | EDOM |
| 5.3 Frequent Inspection | EDOM |
| 5.4 Periodic Inspection | EDOM |
| 5.5 Occasionally Used Hoists | EDOM |
| 5.6 Inspection Records | EDOM |
| 5.7 Inspection Methods and Criteria | 10 and EDOM |
| 6.0 Maintenance & Handling | EDOM |
| 6.1 Lubrication | EDOM |
| 6.2 Load Chain | EDOM |
| 6.3 Mechanical Load Brake with Friction Clutch | EDOM |
| 6.4 Fuses | EDOM |
| 6.5 Storage | EDOM |
| 6.6 Outdoor Installation | EDOM |
| 7.0 Troubleshooting | EDOM |
| 8.0 Warranty | EDOM |
| 9.0 Parts List | 12 and EDOM |

2.0 Technical Information

2.1 Specifications

2.1.1 Product Code



2.1.2 Features and General Specifications

- Push Button Pendant Control – Standard
- Weight/Size – Light weight and compact size, easy to install, move, or store
- Double Braking System – A Weston style load brake and a regenerative brake
- Low Headroom – Die cast aluminum body provides low headroom, perfect for tight quarters
- Upper Limit Switch – Standard
- Over-Travel Protection – Friction clutch integrated with load brake and engineered to protect the hoist from overwinding
- Smooth Operation – Gears are immersed in an oil bath and have deep groove ball and needle bearings to support rotating components
- Corrosion Resistant Load Chain – Nickel-plated, heat treated alloy chain for long life
- Chain Container – Standard

2.1.3 Operating Conditions and Environment

- Temperature range: -4° to +104°F (-20° to +40°C)
- Humidity: 85% or less
- Enclosure Rating: Hoist Body IP54
Push Button Pendant IP65
- Supply Voltage: Standard 120V-1-60
- ASME Duty Classification: H2

| Table 2-1 Hoist Motor Rating | | | | | | | | |
|------------------------------|----------------------|---------------------|-------------|------------------------------|--------------------------|-----------------------------|------------------------------|------------------------------|
| Cap. (lbs.) | Product Code | | Motor | | Intermittent Duty Rating | | Short Time Duty Rating (min) | Rated Current at 120V (amps) |
| | Single Speed S Model | Dual Speed DS Model | Output (Hp) | Rated Current at 115V (Amps) | Duty Rating % ED | Max. Start Freq. (Times/Hr) | | |
| 1050 | ED1050S | ED1050DS | 0.8 | 10 | 30 | 180 | 15 | 10 |

| Table 2-2 Hoist Specifications | | | | | | | | | | |
|--------------------------------|----------------------|---------------------|------------------------|---------------|--|---------------------|-------------------|----------|---|----------|
| Cap. (lbs.) | Product Code | | Lifting Speed (ft/min) | | Load Chain Wire Diameter (mm) x Chain Fall Lines | Load Sheave Pockets | Net Weight (lbs.) | | Weight for Additional One Foot of Lift (lbs.) | |
| | Single Speed S Model | Dual Speed DS Model | S Model | DS & DA Model | | | S Model | DS Model | S Model | DS Model |
| 1050 | ED1050DS | ED1050DS | 22 | 22/6 | 4.0 x 2 | 5 | 46 | 47 | 0.49 | 0.52 |

2.2 Dimensions

| Table 2-3 Hoist Dimensions | | | | | | | | | | | | |
|----------------------------|-----------------|----------------------|-------------------------|--------|--------|--------|--------|--------|--------|--------|--------|--------|
| Cap. (lbs.) | Headroom C (in) | Standard Lift L (ft) | Push Button Cord L (ft) | a (in) | d (in) | e (in) | f (in) | g (in) | h (in) | i (in) | j (in) | k (in) |
| | S & DS Model | S & DS Model | S & DS Model | | | | | | | | | |
| 1050 | 20.5 | 10 | 8 | 16.9 | 8.1 | 8.8 | 9.0 | 0.9 | 6.1 | 2.9 | 1.0 | 17.9 |

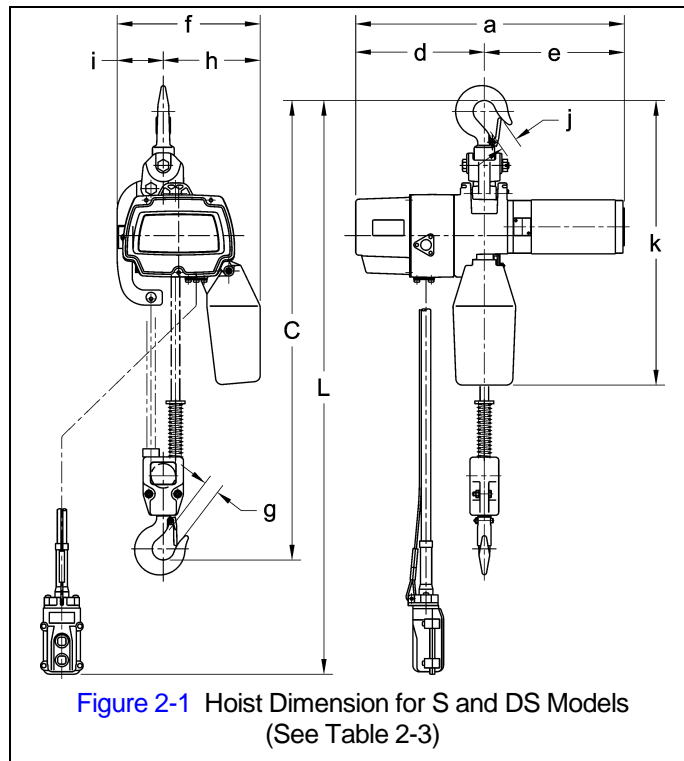


Table 2-4 Hoist with Push or Geared Trolley Specifications

| Capacity (lbs) | Product Code | | Lifting Speed (ft/min) | | Standard Lift (ft) | Push Button Cord L (ft) | Motor Output (HP) | Intermittent Duty Rating | | Short Time Duty Rating (min) | Rated Current at 120V (amps) | Adjustable Beam Width (in.) | Min. Radius for Curve (in) | Net Wt. (lbs) |
|----------------|--------------|--------------|------------------------|----------|--------------------|-------------------------|-------------------|--------------------------|-----------------------------|------------------------------|------------------------------|------------------------------|----------------------------|---------------|
| | S & DS Model | S & DS Model | S Model | DS Model | S & DS Model | S & DS Model | | Duty Rating % ED | Max. Start Freq. (Times/Hr) | | | | | |
| 1050 | with PTS2005 | with GTS2010 | 22 | 22/6 | 10 | 8 | 0.8 | 30 | 180 | 15 | 10 | 2.28 – 4.00 (2.28 – 5.00) | 43.3 (51.2) | 55 (75) |

FIGURES IN PARENTHESIS ARE DATA FOR GEARED TROLLEY.

Table 2-5 Single Speed or Dual Speed Hoist with Push Trolley Dimensions

| Capacity (lbs) | Product Code | | Headroom C (in) | a (in) | b (in) | e (in) | g (in) | h (in) | i (in) | j (in) | k (in) | m (in) | n (in) | r (in) | t (in) |
|----------------|--------------|---------|-----------------|--------|--------|--------|--------|--------|--------|--------|--------|--------|--------|--------|--------|
| | Hoist | Trolley | | | | | | | | | | | | | |
| 1050 | ED1050 | PTS2005 | 20.5 | 8.0 | 7.2 | 1.8 | 0.9 | 3.2 | 2.36 | 0.7 | 3.0 | 1.9 | 3.3 | 1.5 | 0.87 |

Table 2-6 Single Speed or Dual Speed Hoist with Geared Trolley Dimensions

| Capacity (lbs) | Product Code | | Headroom C (in) | E (ft) | a (in) | b (in) | e (in) | g (in) | h (in) | i (in) | j (in) | k (in) | k' (in) | m (in) | n (in) | r (in) | t (in) | u (in) |
|----------------|--------------|---------|-----------------|--------|--------|--------|--------|--------|--------|--------|--------|--------|---------|--------|--------|--------|--------|--------|
| | Hoist | Trolley | | | | | | | | | | | | | | | | |
| 1050 | ED1050 | GTS2010 | 21.0 | 7.5 | 13.6 | 9.3 | 6.0 | 0.9 | 4.2 | 2.80 | 1.1 | 3.7 | 4.2 | 2.2 | 4.4 | 2.0 | 0.98 | 7.2 |

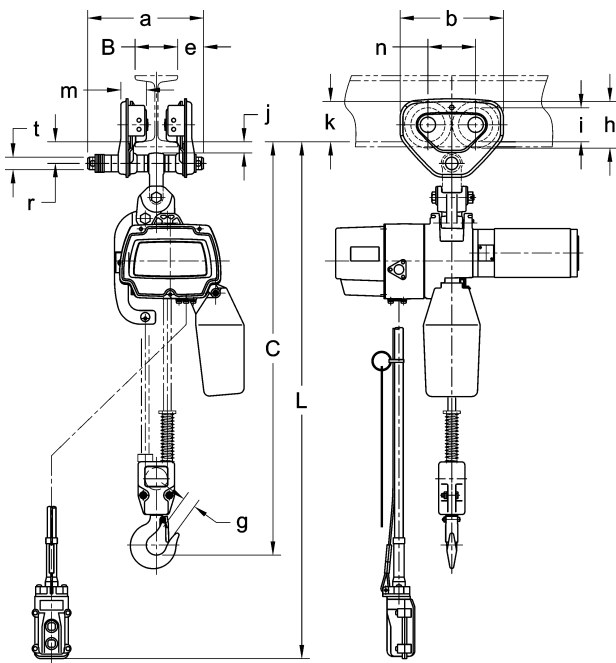


FIGURE 2-2 PUSH TROLLEY DIMENSION FOR S AND DS MODELS (SEE TABLE 2-5)

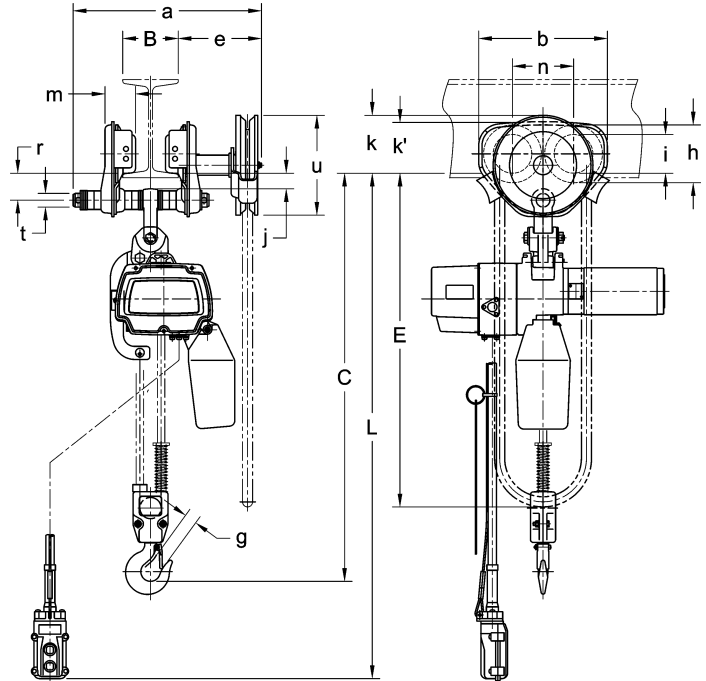
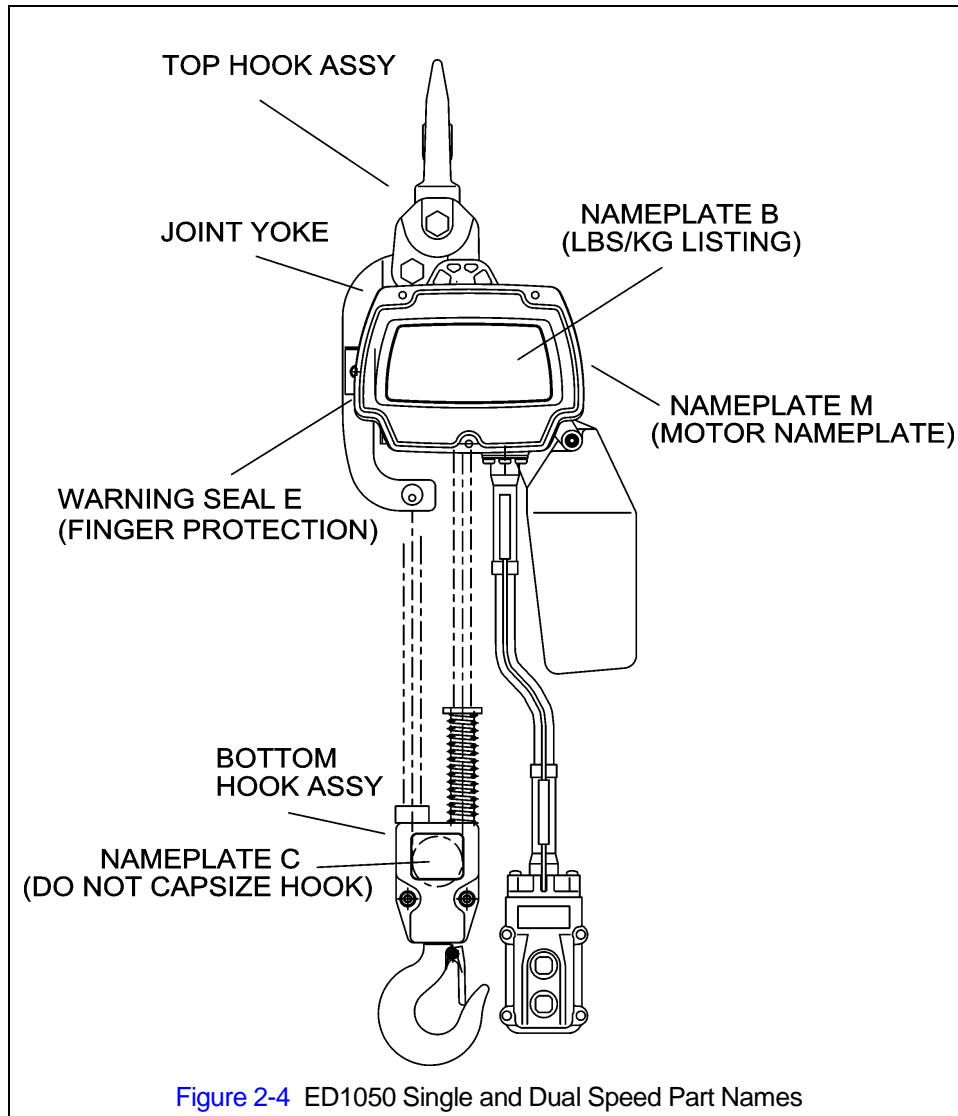


FIGURE 2-3 GEARED TROLLEY DIMENSION FOR S AND DS MODELS (SEE TABLE 2-6)

| Table 2-7 ED1050 Hook Dimensions* | | | | | | | | |
|-----------------------------------|--------|--------|--------|--------|--------|--------|--------|--------|
| Capacity (lbs.) | Hook | a (in) | b (in) | c (in) | d (in) | e (in) | f (in) | g (in) |
| 1050 | Top | 1.1 | 0.7 | 0.9 | 0.7 | 1.4 | 1.2 | 1.1 |
| | Bottom | 1.1 | 0.7 | 0.9 | 0.7 | 1.4 | 1.4 | 0.9 |

*See Table 5-5 for discard dimensions.

2.3 Part Names

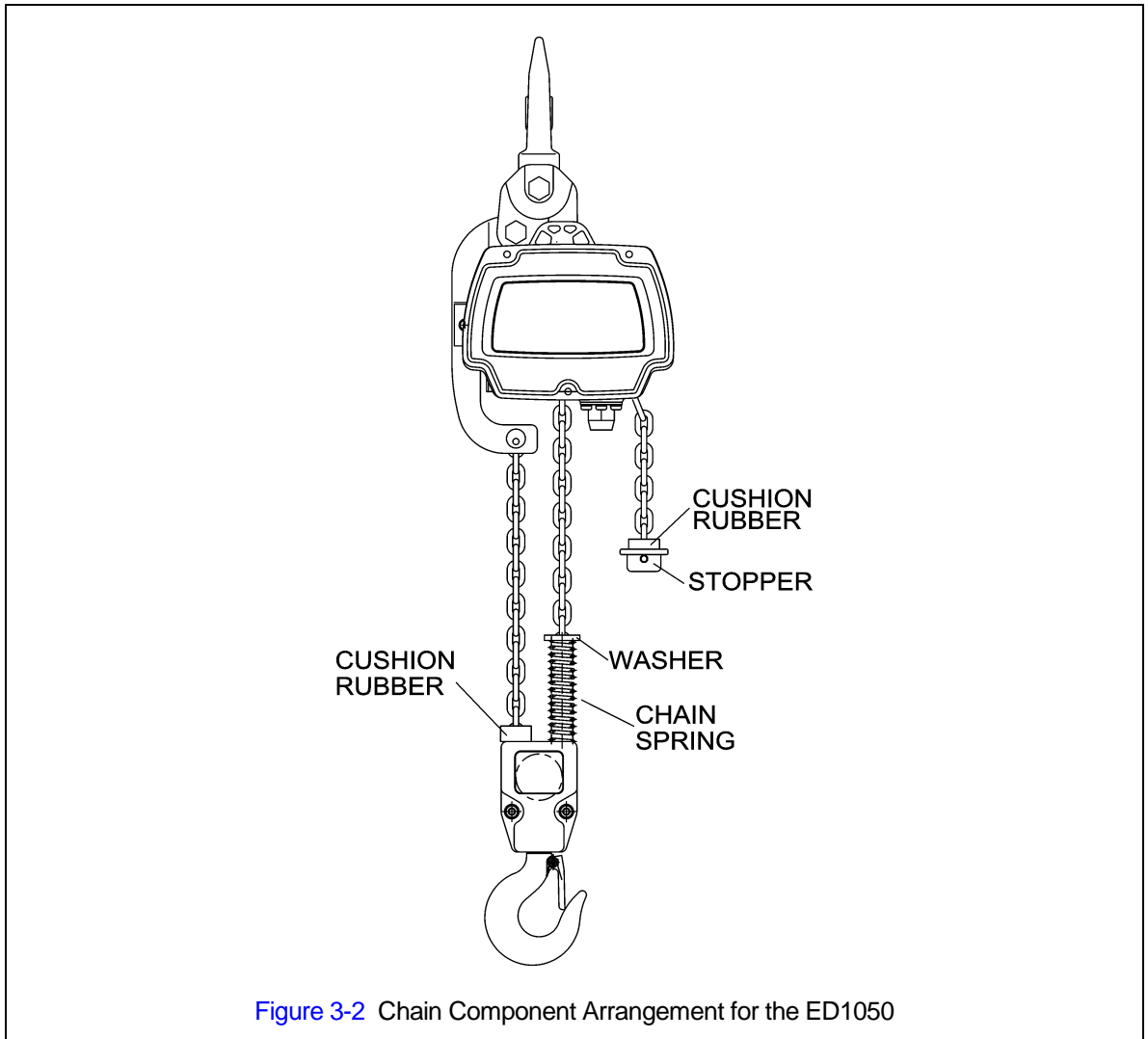


3.0 Pre-operational Procedures

3.2.1 Chain

3.2.1 The quantity and location of the chain components including Cushion Rubbers, Washers and Stopper Assemblies is shown in Table 3-2, and Figure 3-2. Ensure that all chain components are in the correct location and properly installed. Never operate the hoist with incorrect, missing or damaged chain components.

| Table 3-2 Chain Stopper Placement | | |
|-----------------------------------|-------------------------|--------------|
| Capacity Code | Load Side | No Load Side |
| S & DS | Adjacent to bottom yoke | Last link |



3.6 Mounting the Hoist

3.6.1 Manual Trolley - Follow instructions in Owner's Manual provided with the trolley.

3.6.2 Hook Mounted to a Fixed Location - Attach the hoist's top hook to the fixed suspension point.

3.6.3 **⚠️ WARNING** Ensure that the fixed suspension point rests on the center of the hook's saddle and the hook's latch is engaged.

5.0 Inspection

NOTICE The information listed in this section is intended to supplement Section 5.7 of the EDOM.

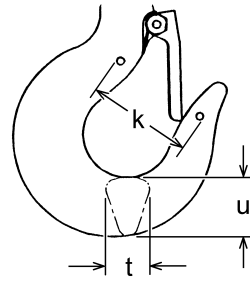
| Table 5-3 Hoist Inspection Methods and Criteria | | | |
|--|------------------|--|--|
| Use this table in conjunction with Table 5-3 of the EDOM. The entries in this table replace in their entirety the corresponding entries in Table 5-3 of the EROM. | | | |
| Item | Method | Criteria | Action |
| Hooks - Idle Sheave and Axle (Bottom Hook on Double Fall Hoist) | Visual, Function | Pockets of Idle Sheave should be free of significant wear. Idle Sheave surfaces should be free of nicks, gouges, dirt and grime. Bearing parts and surfaces of Idle Sheave and Axle should not show significant wear. Idle Sheave should rotate freely with no roughness or significant free play. | Clean/lubricate, or replace as required. |
| Load Chain - Reeving | Visual | Chain should be reeved properly through Load Sheave (and Idle Sheave for double fall hoist) - refer to Section 6.4 . Chain, Chain Spring, Cushion Rubbers, and Stoppers should be installed properly - refer to Section 3.2 . | Reeve/Install chain properly. |
| Cushion Rubber | Visual | Should be free of significant deformation. | Replace. |
| Chain Springs | Visual | Chain springs should not be deformed or compressed. | Replace. |

Table 5-5 Top Hook & Bottom Hook Dimensions

"k" Measured When New:

Top: _____

Bottom: _____



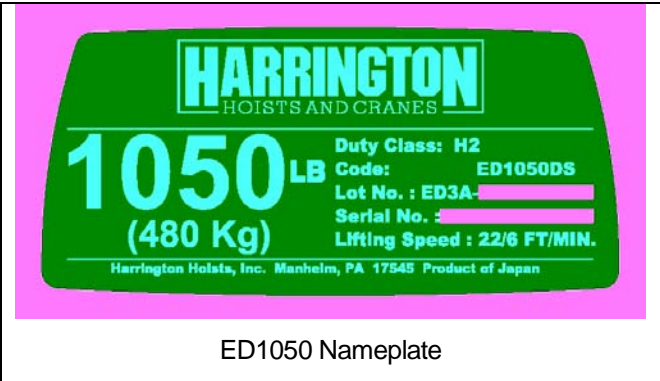
| Capacity (lbs) | *Nominal "k" Dimension inch (mm) | "u" Dimension inch (mm) | | "t" Dimension inch (mm) | |
|-------------------|--|----------------------------|----------|----------------------------|----------|
| | | Standard | Discard | Standard | Discard |
| 1050 | 1.65(42) | 0.93(23.5) | 0.83(21) | 0.69(17.5) | 0.63(16) |

* These values are nominal since the dimension is not controlled to a tolerance. The **"k" dimension** should be measured when the hook is new - this becomes a reference measurement. Subsequent measurements are compared to this reference to make determinations about hook deformation/stretch. See [EDOM Section 5.7](#), "Hooks - Stretch".

9.0 Parts List

When ordering Parts, please provide the Hoist code number, lot number and serial number located on the Hoist nameplate (see fig. below).

Reminder: Per sections 1.1 and 3.9.4 to aid in ordering Parts and Product Support, record the Hoist code number, lot number and serial number in the space provided on the cover of this manual.



The parts list is arranged into the following sections:

| Section | Page |
|----------------------------------|------|
| 9.1 ED1050 Additional Parts..... | 14 |

A designator is used to distinguish parts that apply only to a particular model or option. Refer to Section 2 for hoist model numbers and additional descriptions. The designators are:

- S = Single Speed
- DS = Dual Speed

This Page Intentionally Left Blank

9.1 ED1050 ADDITIONAL PARTS

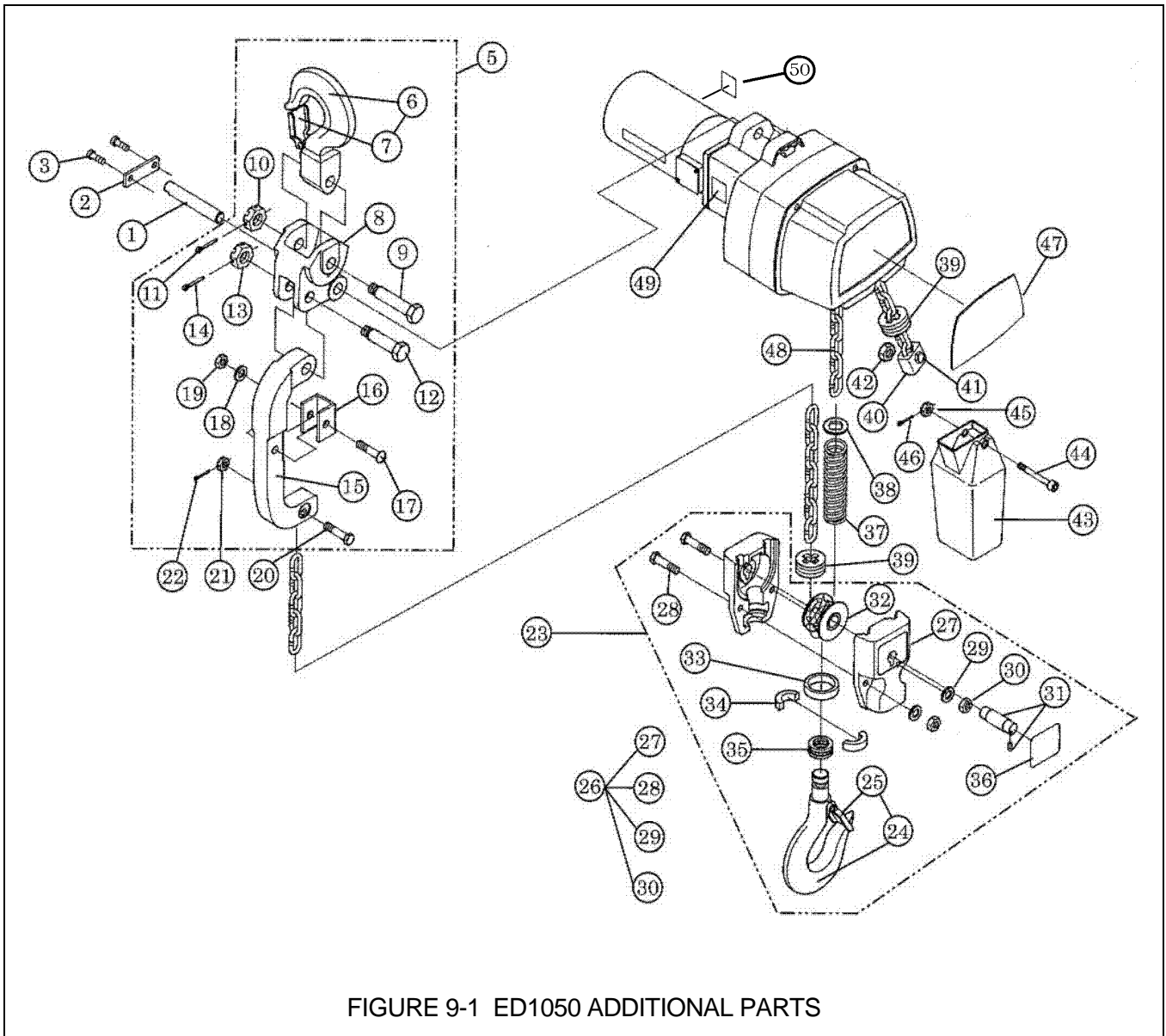


FIGURE 9-1 ED1050 ADDITIONAL PARTS

9.1 ED1050 ADDITIONAL PARTS

| Fig. No. | Part Number | Part Name | Qty Per Hoist |
|----------|--------------|------------------------------|---------------|
| 5 | E3DBX48S1470 | Connection yoke complete set | 1 |
| 6 | E3DBX48S6460 | Top hook assembly | 1 |
| 7 | CF071005 | Hook Latch assembly | 1 |
| 8 | E3DBX48S9470 | Connection yoke | 1 |
| 9 | ES006005L | Top Pin, L | 1 |
| 10 | L3183008 | Slotted nut | 1 |
| 11 | 9009403 | Split pin | 1 |
| 15 | E3DBX48S9580 | Joint yoke | 1 |
| 16 | E3DBX48S9592 | Protection pad | 1 |
| 17 | J1AG25003535 | Truss head machine screw | 1 |
| 18 | 9012510 | Washer | 1 |
| 19 | 9098503 | U nut | 1 |
| 20 | E2D041125 | Chain pin | 1 |
| 21 | E2D049125 | Slotted nut | 1 |
| 22 | 9009402 | Split pin | 1 |
| 23 | E3DHX48S1480 | Bottom hook complete set | 1 |
| 24 | E3DBX48S2480 | Bottom yoke assembly | 1 |
| 25 | ER1BS9002 | Hook latch assembly | 1 |
| 26 | E3DBX48S2485 | Bottom yoke assembly | 1 |
| 27 | E3DBX48S9485 | Bottom yoke | 2 |
| 28 | 9093307 | Bolt | 2 |
| 29 | 9012709 | Spring lock washer | 2 |
| 30 | 9093420 | Nut | 2 |
| 31 | E3DBX48S6489 | Bottom shaft assembly | 1 |
| 32 | E3DBX48S6487 | Idle sheave assembly | 1 |
| 33 | ES026003 | Thrust collar A | 1 |
| 34 | ES027003 | Hook stopper | 2 |
| 35 | ES022003 | Thrust bearing | 1 |
| 36 | E3DBX48S9597 | Name plate C | 1 |
| 37 | E3DBX48S9590 | Chain spring | 1 |
| 38 | E3DBX48S9591 | Washer | 1 |

9.1 ED1050 ADDITIONAL PARTS

| Fig. No. | Part Number | Part Name | Qty Per Hoist | |
|-----------------|--------------------|------------------------------------|----------------------|---|
| 43 | E2D1835125 | Chain container | 1 | |
| | 44 | E2D854125 | Socket bolt BP | 1 |
| | 45 | E2D853125 | U nut | 1 |
| | 46 | 9009402 | Split pin | 1 |
| 47 | E3DHX48S9801 | Name plate B, Single Speed | 1 | |
| | E3DHX48R9801 | Name plate B, Dual Speed | 1 | |
| 49 | E3DBX48S9599 | Warning Seal E (Finger protection) | 1 | |
| 50 | E3DHX48S9802 | Nameplate M (Motor Nameplate) | 1 | |

This Page Intentionally Left Blank

This Page Intentionally Left Blank

This Page Intentionally Left Blank



www.harringtonhoists.com

Harrington Hoists, Inc.
401 West End Avenue
Manheim, PA 17545-1703
Phone: 717-665-2000
Toll Free: 800-233-3010
Fax: 717-665-2861

Harrington Hoists – Western Division
2341 Pomona Rincon Rd. #103
Corona, CA 92880-6973
Phone: 951-279-7100
Toll Free: 800-317-7111
Fax: 951-279-7500

EDOM1050 SUP