



Forestry & Logging Tools



Cant Hooks

Pike Poles

Peavies

Log Jacks

Timber Carriers

Skidding Tongs

Lifting Tongs

Hookaroons

Firefighting Tools

Rigging Hardware

Transportation Products

Hoists





 **Dixie
Industries**

Table of Contents

In February of 1910 William, Emil and Fred Stocker came to Chattanooga, Tennessee from Saginaw, Michigan to escape the cold North winters.

Blacksmiths by trade, the brothers were drawn to the South by its growing timber industry and the abundance of strong Hickory wood for tool handles.

That year the brothers incorporated **Dixie Logging Tool Company** at the corner of 13th Street & Greenwood Ave.- the forging plant still operates on that site to this day.

Through booms, depression, recessions and two World Wars, Dixie Industries has provided the forestry and logging industry with quality tools for 100 years.

Why Dixie chooses only Hickory

Hickory is the hardest and strongest wood found in North America. Well known for its strength and shock resistant properties, hickory is extremely tough, resilient, even textured, very hard and rated only moderately heavy—providing excellent strength-to-weight ratios.

Hickory's abundance for commercial availability is 2.2% of total U.S. hardwoods. Handles made of Hickory will outlast and out-perform other hardwoods for years of reliable service.

Maple, also a hardwood, has good strength properties, but dries slowly with high shrinkage and can be susceptible to movement in performance. Maple's abundance for commercial availability is 4% of total U.S. hardwoods—making it a cheaper alternative to Hickory.

Scientific tests for toughness performed by the USDA Forest Service show that **Hickory is 47% stronger than Maple.***

Dixie Industries always has, and always will use White Hickory for our wood handles in Cant Hooks, Peavies, Log Jacks, Timber Carriers and Hookaroons.

Handled Tools

Cant Hooks	3
Peavies	4
Hookaroons	5
Pike Poles	6
Log Jack	7
Timber Carrier	7
Mill Rakes & Brooms	7

Tongs

Skidding	8
Logger Style	8
Timber Lifting	9
Alloy Lifting	9

Tractor Rigging

10

Woodworking

11

Miscellaneous

12

Transportation Products

13–16

Hoists

17

Terms and Conditions

18



* Forest Products Laboratory. 1999. U.S. Dept. of Agriculture, Forest Service pp.4-24.

Cant Hook

Dixie Industries manufactures Cant Hooks from the highest quality materials available.

Wooden handles are top quality straight grain white mountain hickory hardwood, kiln dried to 18% moisture content, then precision cut to an exact fit.

Duckbill Hooks are drop forged with the bills ground to a fine point. Clasps and extension toe rings are ductile iron castings for long lasting service.

Replacement parts including handles, duckbill hooks, extension toe rings and clasps are available.

Clasp



Extension Toe Ring



Forged Duckbill Hook



Item #	For Log Sizes (in.)	Total Wt.	Replacement Handle #	Hdle Dia.	Hdle Length	Hdle Wt.	Duckbill Hook #	Duckbill Hook Lgth
<i>hickory handle</i>								
06100	6" to 16"	4.6 lbs.	06102	2¼"	2'	2.0 lbs.	24010	7/16 x 7/8 x 8
06110	6" to 16"	6.0 lbs.	06112	2¼"	2½'	3.0 lbs.	24010	7/16 x 7/8 x 8
06120	6" to 16"	6.4 lbs.	06122	2¼"	3'	3.5 lbs.	24010	7/16 x 7/8 x 8
06130	6" to 16"	7.0 lbs.	06132	2¼"	3½'	3.8 lbs.	24010	7/16 x 7/8 x 8
06140	6" to 16"	8.3 lbs.	06142	2¼"	4'	4.0 lbs.	24010	7/16 x 7/8 x 8
06240	6" to 16"	10.1 lbs.	06242	2½"	4'	5.0 lbs.	24010	7/16 x 7/8 x 8
06250	8" to 24"	11.7 lbs.	06252	2½"	4½'	5.5 lbs.	24230	½ x 1 x 9
06260	8" to 24"	13.5 lbs.	06262	2½"	5'	6.0 lbs.	24230	½ x 1 x 9
							24230	½ x 1 x 9

Dixie Industries Cant Hooks can be built to customer specifications upon request. Please contact a Customer Service representative for more information.

Peavies

Dixie Industries manufactures two styles of Peavies for the professional logger: the Tubular Steel Socket Style and the Rafting/Bangor Style.

Handles are top quality straight grain White Mountain Hickory hardwood, kiln dried to 18% moisture content, then precision cut to an exact fit.

Duckbill Hooks are drop forged with the bills ground to a fine point.

The Dixie Bangor style peavy—our lightest tool—features a drop forged pick, precision welded into a drawn carbon steel socket. This one piece unit makes field repairs easier.

Handled Tools



Item #	For Log Sizes (in.)	Total Wt.	Replacement Handle #	Hdle Dia.	Hdle Length	Hdle Wt.	Duckbill Hook #	Duckbill Hook Lgth
Solid Steel Socket Style Peavy								
00120	6" to 16"	7.0 lbs.	00122	2¼"	3'	3.5 lbs.	24010	7/16 x 7/8 x 8
00130	6" to 16"	7.5 lbs.	00132	2¼"	3½'	3.8 lbs.	24010	7/16 x 7/8 x 8
00140	6" to 16"	9.3 lbs.	00142	2¼"	4'	4.0 lbs.	24010	7/16 x 7/8 x 8
00240	6" to 16"	10.5 lbs.	00242	2½"	4'	5.0 lbs.	24010	7/16 x 7/8 x 8
00250	8" to 24"	11.3 lbs.	00252	2½"	4½'	5.5 lbs.	24230	½ x 1 x 9
00260	8" to 24"	12.4 lbs.	00262	2½"	5'	6.0 lbs.	24230	½ x 1 x 9
Rafting/Bangor Style Peavy								
03240	6" to 16"	8.5 lbs.	03242	2½"	4'	4.0 lbs.	24010	7/16 x 7/8 x 8
03250	8" to 24"	10.3 lbs.	03252	2½"	4½'	5.5 lbs.	24230	½ x 1 x 9
03260	8" to 24"	12.0 lbs.	03262	2½"	5'	6.0 lbs.	24230	½ x 1 x 9

Dixie Industries Peavies can be built to customer specifications upon request. Please contact a Customer Service representative for more information.

Hookaroons







Ergonomically designed for specific tasks within a high production mill environment, our hookaroons excel when extreme light weight & durability are required.

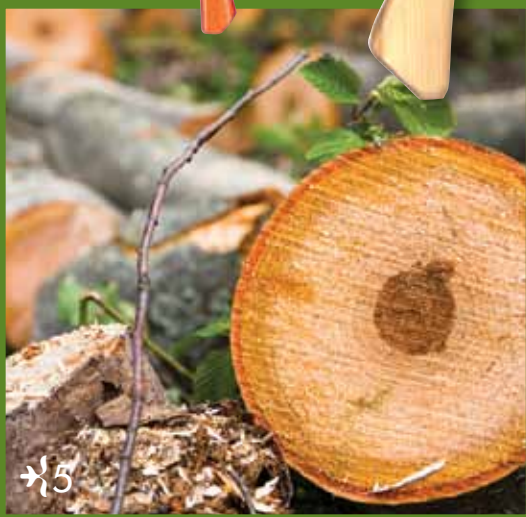
Standard heads are drop forged steel with ground points. Solid Hickory handles are shaped to provide maximum usability.



Safety Orange

	Item #	Description	Approx. wt. ea.	Item # Handle Only
	12292	Head Only	2.0 lbs.	--
	12220	36" Standard Hickory Handle	3.6 lbs.	12221
	12230	36" Standard Safety Handle Orange	3.6 lbs.	12331
	12392	Head Only	1.8 lbs.	--
	12320	36" Standard Hickory Handle	3.6 lbs.	12221
	12330	36" Standard Safety Handle Orange	3.6 lbs.	12331
	12945	Head Only	1.5 lbs.	--
	12900	18" Standard Hickory Knob End Handle	2.9 lbs.	12291
	12920	36" Standard Hickory Handle	3.4 lbs.	12221
	12845	Head Only	1.1 lbs.	--
	12801	18" Standard Hickory Knob End Handle	2.2 lbs.	12291
	12820	36" Standard Hickory Handle	2.7 lbs.	12221
	12831	36" Standard Safety Handle Orange	2.7 lbs.	12331
	12890	48" Standard Hickory Handle	3.2 lbs.	--
Replacement Handles	12291	18" Standard Hickory Knob End Handle	.8 lbs.	--
	12221	36" Standard Hickory Handle	1.8 lbs.	--
	12331	36" Standard Safety Handle Orange	1.7 lbs.	--

Warning: Striking tools may dislodge pieces, which can cause injury. Eye and other personal protection should be used by anyone in the vicinity of a striking tool. Heating or grinding will aggravate the hazardous condition and affect the temper of striking tool. Wear safety goggles and never strike tool against metal or another tool.



Pike Poles



Dixie Pike Poles are manufactured to withstand extensive use of handling timber in and around water. All pike hooks are manufactured from a single piece of high carbon steel and drop forged.

Handled Tools



Aluminum Handle

Anodized aluminum lasts considerably longer than non-anodized aluminum when used in corrosive or wet environments. Dixie Aluminum Pike Poles are considerably lighter than the same lengths made with ash and will not warp or break with continued use. Dixie's exclusive CORE LOK rubber seal assures a watertight barrier. Aluminum handled Pike Poles come with plastic knobs.*

Handle Item #	Approx. Description	Package Diameter	Length	wt. ea.	Quantity
10082	Aluminum Pike Pole	1.5"	6'	3.3 lbs.	3
10002	Aluminum Pike Pole	1.5"	8'	4.0 lbs.	3
10012	Aluminum Pike Pole	1.5"	10'	4.8 lbs.	3
10022	Aluminum Pike Pole	1.5"	12'	5.6 lbs.	3
10032	Aluminum Pike Pole	1.5"	14'	6.3 lbs.	3
10042	Aluminum Pike Pole	1.5"	16'	7.0 lbs.	3
10052	Aluminum Pike Pole	1.5"	18'	7.8 lbs.	3
10062	Aluminum Pike Pole	1.5"	20'	8.6 lbs.	3
10072	Aluminum Pike Pole	1.5"	24'	9.9 lbs.	3

* Wooden knobs available for all pike poles, simply add "WD" to item# when ordering.

Ash Handle

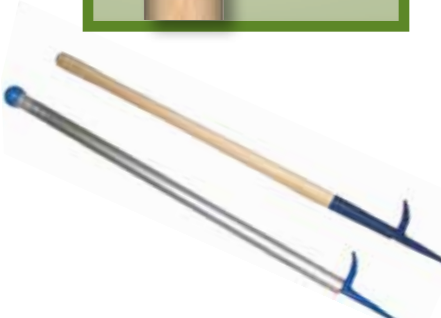
All Ash handles are second growth American Ash - with straight grain throughout the entire handle length. Ash is used in Pike Poles because it is lighter in weight than other woods and offers extremely long grains increasing resiliency to tearing before breaking.



Handle Item #	Approx. Description	Package Diameter	Length	wt. ea.	Quantity
10080	Pike Pole	1.5"	6'	4.2 lbs.	3
10687	Replacement Handle	1.5"	6'	3.1 lbs.	3
10000	Pike Pole	1.5"	8'	5.3 lbs.	3
10607	Replacement Handle	1.5"	8'	4.2 lbs.	3
10010	Pike Pole	1.5"	10'	6.3 lbs.	3
10617	Replacement Handle	1.5"	10'	5.3 lbs.	3
10020	Pike Pole	1.5"	12'	7.3 lbs.	3
10627	Replacement Handle	1.5"	12'	6.3 lbs.	3
10030	Pike Pole	1.5"	14'	8.3 lbs.	3
10637	Replacement Handle	1.5"	14'	7.3 lbs.	3
10040	Pike Pole	1.5"	16'	9.4 lbs.	3
10647	Replacement Handle	1.5"	16'	8.3 lbs.	3

Midget Pike Poles

Item #	Description	Approx. Length	Package wt. ea.	Quantity
13920	Midget Pike Pole - Ash	3'	2.7 lbs.	3
13922	Ash Replacement Handle	3'	1.5 lbs.	3
13925	Midget Pike Pole - Aluminum with Curved Tip	3'	2.7 lbs.	3



Log Jack



A professional quality multi-use tool for the serious wood cutter. Easily converts into a cant hook by removing the lifting brace.

Duckbill hook is made of drop forged steel. Extension toe rings are ductile iron castings for long lasting service. Handle is made from top quality straight grain White Mountain Hickory, kiln dried to 18% moisture content. Ideal for log sizes 3 to 12".*
*other size hooks available on request.

Item #	Description	Handle Diameter	Length	Approx. wt. ea.	Package Quantity
06238	Dual Purpose Log Jack	2.25"	3.5'	10.1 lbs.	1
06239	Replacement Handle	--	--	3.9 lbs.	1

WARNING! Always wear appropriate eye and body protection while using this tool.

Timber Carrier



Heavy steel swivel allows for free movement permitting timber passage through narrow areas.

Ductile iron clasp provides higher strength. Clasp is open at top and drawn tight by a bolt, eliminating the need for a bolt hole through handle—increasing strength.



Item #	Description	Handle Diameter	Length	Approx. wt. ea.	Package Quantity
09041	Timber Carrier	2.5"	4'	12.1 lbs.	1
09341	Replacement Handle	--	--	4.5 lbs.	1
09051	Timber Carrier	2.5"	4.5'	12.9 lbs.	1
09351	Replacement Handle	--	--	4.8 lbs.	1

WARNING! Flexing load in a perpendicular direction of grain could cause handle fracture and result in personal injury

Mill Rakes & Brooms



Extra long handles to safely reach under equipment in paper mills, lumber mills & wood processing plants.

Item #	Description	Rake/Broom Head Size	Length	wt. ea.	Approx. Quantity	Package
080710	Laser Cut Mill Rake	16"	14'	8.5 lbs.	1	1
080712	Heavy Duty Mill Broom	23"	14'	7.4 lbs.	1	1

* replacement broom heads available
This is a special order item



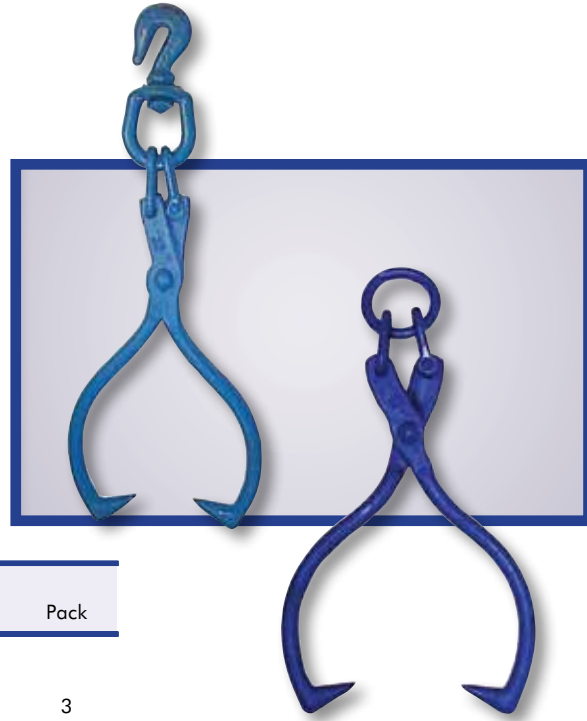
Skidding

Specially shaped to grab and hold poles and logs for skidding and dragging operations.

Upset forged from round steel to position additional steel at critical stress areas. Points are fine ground to assure long lasting sharpness.

Tong sizes 3/4 and 1 inch are supported by a special Tong Shut. Tong sizes 1 1/4 and 1 1/2 inches use screw pin anchor shackles.

Two configurations are available.



Tongs

Item #	Material Diameter		Opening Minimum	Opening Maximum	Approx. Weight	Pack
Ring Only		Ring Size				
40005	3/4"	1/2" x 2 1/2"	3 9/16"	16"	7.0 lbs.	3
42315	1"	5/8" x 2 3/4"	4"	20"	12.8 lbs.	3
40225	1"	5/8" x 2 3/4"	4 1/2"	25"	14.3 lbs.	3
40455	1 1/4"	7/8" x 3 1/4"	7"	32"	28.8 lbs.	1
40555	1 1/2"	1" x 4"	8"	36"	48.0 lbs.	1
Swivel Grab		Hook Size				
40004	3/4"	3/8"	3 9/16"	16"	7.9 lbs.	3
42314	1"	3/8"	4"	20"	13.3 lbs.	3
40224	1"	3/8"	4 1/2"	25"	15.3 lbs.	3
40454	1 1/4"	1/2"	7"	32"	29.7 lbs.	1

Warning: Skidding tongs are designed for pulling or dragging. They are not load rated and should not be used for overhead lifting. Do not heat tong points to sharpen them.



Logger Style

Designed for tree length logging. Logger style tong's unique design places additional material at stress points.

Made from alloy steel for maximum strength and durability. Points are shaped to make hooking and unhooking easy while assuring holding strength. Tong is supported with heat treated ring attached by shackles.

Item #	Material Diameter	Ring Size	Opening Minimum	Opening Maximum	Approx. Weight	Pack
42815	1"	3/4" x 3"	5"	13"	15.5 lbs.	1
42805	1 1/4"	7/8" x 3 1/4"	7"	16"	24.5 lbs.	1
42825	1 1/2"	1" x 4"	7 1/2"	22"	33.8 lbs.	1

Warning: Not for overhead lifting.



*** See page 12 for tong replacement parts.**

NOTE: Dixie Industries' tongs meet the rating and testing requirements of ASME B30.20 (Below the Hook Lifting Devices) for Group 1 products - Structural and Mechanical Lifting Devices.

Timber Lifting

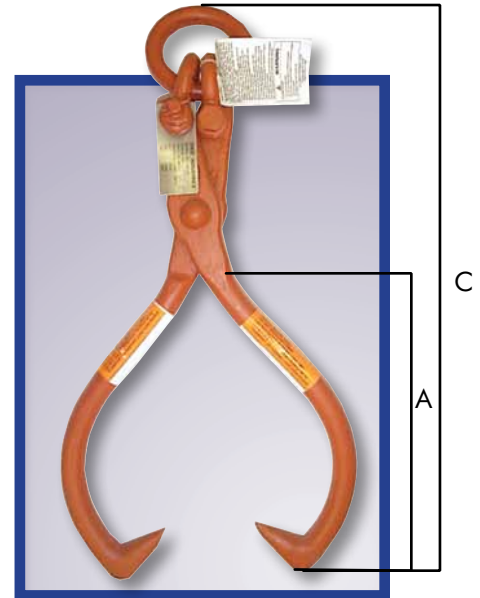


Tong shape has been designed to provide a sure grip on poles and logs. Painted bright orange for job site identification.

Dixie Industries upset forges round alloy steel for optimum tensile strength and durability.

All Dixie lifting tongs are proof loaded to 2 times the working load limit then affixed with a permanent metal identification tag. Written certification is also supplied at time of shipment.

Lifting tongs are supported by either a screw pin shackle or nut & bolt safety shackle with a ring.



Item #	Material Dia. & Max. Opening	Close Ht. "A"	Overall Ht. "C"	Shackle Size	Ring Size	WLL at Degree of Opening						Approx. Weight
						75°		135°		180°		
						Jaw Open.	WLL (lbs)	Jaw Open.	WLL	Jaw Open.	WLL	
40008	3/4" x 16"	7"	18 3/4"	3/8" N/B*	5/8" x 2 3/4"	3 3/4"	1,500	12"	1,000	16"	750	7.0 lbs.
40218	1" x 20"	9"	23 1/4"	1/2" N/B	3/4" x 3"	4"	2,500	17"	2,000	20"	1,500	16.5 lbs.
40228	1" x 25"	10"	25 1/4"	1/2" N/B	3/4" x 3"	4 1/2"	2,500	20"	2,000	25"	1,500	17.0 lbs.
40458	1 1/4" x 32"	14"	31"	5/8" N/B	7/8" x 3 1/4"	7"	3,000	27"	2,500	32"	2,000	36.0 lbs.
40558	1 1/2" x 36"	16"	37 3/4"	3/4" N/B	1" x 4"	7 1/2"	5,000	32"	4,000	36"	3,000	50.5 lbs.

Warning: Know your Working Load Limit—do not exceed it! The WLL decreases as you increase the size of the jaw opening. Do not heat tongs to sharpen points! Do not exceed maximum rated capacity.
*NB= nut and bolt

Alloy Lifting Tongs



Special situations require special equipment to safely and effectively get the job done.

Oversized logs, uneven terrain and any number of other unusual circumstances can face loggers from day to day. Dixie's alloy lifting tongs keep the work flow going without having to miss a beat. All tongs are powder coated orange.

Item #	Description	Open Max.	Open Min.	Wt. lbs.	WLL lbs.
D080451	1 1/2" x 48" Alloy Lifting Tong	48"	7 1/2"	13.1	3,000

Note: Maximum and minimum dimensions are approximate and can vary.



Alloy Lifting Tong

Saddle Grab Link

Attachments that work as hard as you do. Extra material at critical load bearing area in saddle of link.

Heat treated drop forged alloy steel link. Designed to work in conjunction with 3/8" chain and 3/8" Hammerlok® link. 4:1 design factor.



Item #	Material Diameter	Inside Length	Crown Width	Throat Width	WLL	Approx. wt. ea.	Pack
44200	3/4"	5 1/2"	2 1/4"	9/16"	6,600 lbs.	2.1 lbs.	10

Warning: Never exceed the Working Load Limit.

Choker Hook

Attachments that work as hard as you do. Designed to provide superior load handling capabilities.

Heat treated drop forged alloy steel hook. Designed to work in conjunction with 3/8" chain. Choker hook is supplied with a 1/2" x 2 hex head grade 8 bolt. Specially designed retainer curtails chain from exiting throat section. Hook is supplied with a large bowl to allow chain to move freely. 4:1 design factor.



Item #	Chain Size	Throat Opening	Inside Bowl Dia.	Pin Diameter	WLL	Approx. wt. ea.	Pack
44300 Large	3/8"	1/2"	1 1/2"	1/2"	6,600 lbs.	2.0 lbs.	10
44330 Micro	3/8"	1/2"	1 1/2"	1/2"	6,600 lbs.	1.5 lbs.	10

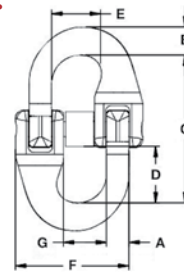
Warning: Never exceed the Working Load Limit.

Hammerlok Coupling Link

Hammerlok® Dual rated for use with HA800 OR HA1000.

WORKING LOAD LIMIT: 2,700 to 35,300 lbs.

Used for overhead lifting slings to connect chain branches to the master link and the hook to attachments. Constructed of drop forged alloy steel. Can be used with Grade 100 and Grade 80 chain. Must be matched to chain size. Do not use for chain repair or splicing. Meets ASTM A952 standards.



Product Code	Size (in.)	Working Load Limit (lbs.)	Load Pin Kit Product Code	Dimensions (in.)							Weight (lbs.)
				A (Max)	B (Max)	C	D	E	F	G	
667021-2	7/32	2,700	R667021-2	0.29	0.28	1.85	0.69	0.61	1.44	0.52	0.27
667028-2	9/32	4,300	R667028-2	0.37	0.44	1.94	0.69	0.68	1.58	0.61	0.28
667038-2	3/8	8,800	R667038-2	0.52	0.50	3.02	1.15	1.05	2.33	0.81	0.84
667050-2	1/2	15,000	R667050-2	0.64	0.68	3.79	1.43	1.29	2.98	1.10	1.87
667062-2	5/8	22,600	R667062-2	0.81	0.91	4.50	1.70	1.54	3.57	1.32	3.13
667075-2	3/4	35,300	R667075-2	0.97	1.07	5.36	2.06	1.78	4.69	1.52	5.75

Warning: Never exceed the Working Load Limit.

Draw Shaves



A multi-purpose tool for the woodworking industry. Blade is cut from a solid bar of steel, precision ground & sharpened to a fine working edge.

Item #	Description	Approx. wt. ea.	Pack
49962	5" Draw Shave	1.7 lbs.	5
49941	8" Draw Shave	1.8 lbs.	5
49931	10" Draw Shave	2.0 lbs.	5
49951	13" Draw Shave	2.5 lbs.	4

Warning: Always wear full eye & hand protection while using sharp tools.



In Shave



A precision tool for stripping logs and craft projects. Great tool for fence posts.

Item #	Description	Approx. wt. ea.	Pack
49961	5" In Shave	1.7 lbs.	5

Warning: Always wear full eye & hand protection while using sharp tools.



Shingle Froe



For splitting out shingles or shakes and riving green wood. Blade is made of 5160 Alloy Steel, handle is lacquered Hickory.

Item #	Description	Approx. wt. ea.	Blade	Handle
49991	Shingle Froe Assembly	3.0 lbs.	16" x 2"	18"

Warning: Always wear full eye and hand protection while using sharp tools. This is a special order item.

Pulp Hook

A versatile, general purpose material handling hand tool for use in wood and other materials.

Item #	Description	Approx. wt. ea.	Pack
24358	11" Abbott Pulp Hook	1.3 lbs.	6
24361	16" Bentley Pulp Hook	1.7 lbs.	6



Miscellaneous

Wedges

Tree felling tools for any situation.

Item #	Length	Width	Head	Approx. wt. ea.	Pack
Aluminum Wedges					
Non-sparking #713 aluminum alloy, safer than either steel or magnesium. Will not harm teeth of chain saw on accidental contact.					
49902	7"	3½"	1½ x 1½"	1.2 lbs.	12

Warning: Always use eye protection when using wedges.

Item #	Length	Width	Head	Approx. wt. ea.	Pack
Plastic Chain Saw Wedges					
High density polyethylene plastic for maximum strength and resistance to "mushrooming" when driven with a hammer.					
49914	10¾"	3¾"	1¾"	.6 lbs.	12
49915	7½"	2¾"	1½"	.4 lbs.	12



Aluminum Wedge

Plastic Wedges

Forged Rings

Tong Replacement Part

Weldless Rings, drop forged of high carbon steel to provide consistent grain flow. 5:1 design factor.

Item #	Material Dia.	Inside Dia.	For Use w/ Tong #	Weight per 100 pcs.	WLL	Pack
43709	½"	2½"	40005	64 lbs.	5,000 lbs.	12
43809	⅝"	2¾"	40225, 42315	99 lbs.	7,000 lbs.	12
43009	¾"	3"	42815	156 lbs.	10,000 lbs.	12
43109	⅞"	3¼"	40455, 42805	250 lbs.	14,500 lbs.	12
43209	1"	4"	40555, 42825	377 lbs.	18,000 lbs.	12



Warning: Not to be used for overhead lifting.

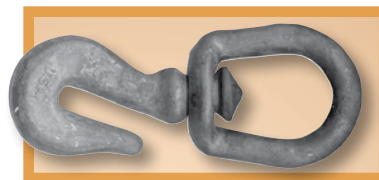
Swivel Hooks

Tong Replacement Part

Drop forged from carbon steel, this assembly is specially designed to be used with skidding tongs.

Item #	Material Dia.	Inside Dia.	For Use w/ Tong #	Weight per 100 pcs.	WLL	Pack
43794	½"	2½"	40454	64 lbs.	4,500 lbs.	12
43594	⅝"	2¾"	40004, 40224, 42314	99 lbs.	2,650 lbs.	12

Warning: Not to be used for overhead lifting.



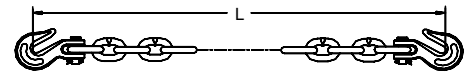
Clevis Assembly Grade 70



GRADE 70

WORKING LOAD LIMIT: 3,150 to 11,300 lbs.

Hook on each end. Meets all Department of Transportation (D.O.T.) requirements and is required in most states by the D.O.T. Chain won't degrade in ultra-violet light, as compared to nylon straps. Custom lengths available. Gold Chromate per ASTM B633 Fe/ZN 13 Type II.



Product Code	Chain Size (in.)	Working Load Limit (lbs.)	Product Code in Bag	L (ft.)	Weight (lbs.)
Short Link					
638265	1/4	3,150	-	20	16.41
638274	5/16	4,700	-	12	13.10
638282	5/16	4,700	638277	16	17.10
638283	5/16	4,700	-	18	19.12
638284	5/16	4,700	638266	20	21.13
638313	5/16	4,700	-	24	25.15
638279	5/16	4,700	638279BG	25	26.16
638291	3/8	6,600	-	14	22.23
638292	3/8	6,600	638268	16	25.19
638293	3/8	6,600	-	18	28.15
638294	3/8	6,600	638267	20	31.11
638350	1/2	11,300	-	20	56.93
Standard Link					
639082	5/16	4,700	-	16	15.60
639084	5/16	4,700	639084BG	20	20.40
639079	5/16	4,700	-	25	25.30
639091	3/8	6,600	-	14	21.00
639092	3/8	6,600	-	16	23.80
639093	3/8	6,600	-	18	26.60
639094	3/8	6,600	639094BG	20	31.16
639097	3/8	6,600	-	25	36.30

Clevis Assembly with Import Hooks

GRADE 70

WORKING LOAD LIMIT: 4,700 to 11,300 lbs.

Hook on each end. Meets all Department of Transportation (D.O.T.) requirements and is required in most states by the D.O.T. Chain won't degrade in ultra-violet light, as compared to nylon straps. Custom lengths available. Gold Chromate per ASTM B633 Fe/ZN 13 Type II.



Product Code	Chain Size (in.)	Working Load Limit (lbs.)	L (ft.)	Weight (lbs.)
639032GGC20	5/16	4,700	20	20.30
639032GGC25	5/16	4,700	25	25.20
639038GGC20	3/8	6,600	20	29.20
639038GGC25	3/8	6,600	25	31.16
638350GGC20	1/2	11,300	20	55.50

General benefits & features of cm heavy-duty tie-downs. Meets FMCSA, CVSA tie-down requirements. Made from high quality alloy steel. Made in USA. Cannot be used for overhead lifting. Lighter weight than most transport binder chains. Does not degrade in ultra-violet light. Permanent identification on chain and attachments. Made to order assemblies available in 3 days or less.

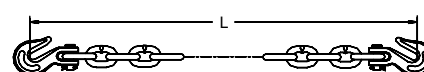
Clevis STYLE Heavy-Duty Tie-downs



GRADE 80

WORKING LOAD LIMIT: 4,500 to 12,000 lbs.

Product Code	Chain Size (in.)	Chain Grade	Working Load Limit (lbs.)	Length (L) (ft.)	Chain Finish	Weight (lbs.)
607031CV20	5/16	80	4,500	20	Black	19.60
607031CV25	5/16	80	4,500	25	Black	24.10
607037CV20	3/8	80	7,100	20	Black	30.30
607037CV25	3/8	80	7,100	25	Black	37.50
607050CV20	1/2	80	12,000	20	Black	54.60
607050CV25	1/2	80	12,000	25	Black	67.30



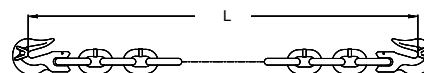
Clevlok® Style Heavy-Duty Tie-Downs



GRADE 80 & 100

WORKING LOAD LIMIT: 7,100 to 12,000 lbs.

Product Code	Chain Size (in.)	Chain Grade	Working Load Limit (lbs.)	Length (L) (ft.)	Chain Finish	Weight (lbs.)
607037CL20	3/8	80	7,100	20	Black	31.00
607037CL25	3/8	80	7,100	25	Black	38.00
607050CL15	1/2	80	12,000	15	Black	42.00
607050CL20	1/2	80	12,000	20	Black	55.00
607337CL20	3/8	100	8,800	20	Black	31.00
607337CL25	3/8	100	8,800	25	Black	38.50



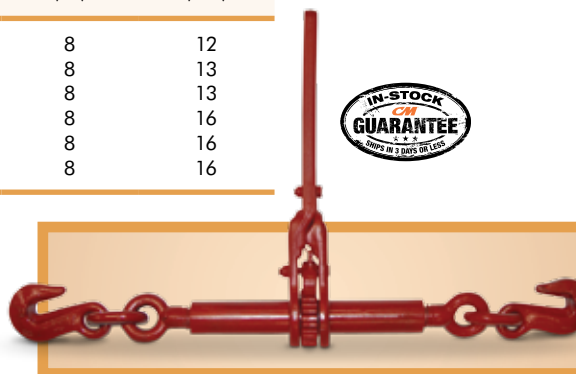
Ratchet Binders Heavy Duty Tie-Downs



GRADE 80 & 100

WORKING LOAD LIMIT: 5,400 to 16,000 lbs.

Product Code	With Chain Size (in.)	Use With Chain Grade	Working Load Limit (lbs.)	End Fittings	Take Up (in.)	Weight (lbs.)
48365	5/16	80	5,400	Hook & Hook	8	12
48360	3/8	80	7,100	Hook & Hook	8	13
48366	3/8	80 or 100	9,200	Hook & Hook	8	13
48367	1/2	80	13,000	Hook & Hook	8	16
48358	1/2	80 or 100	15,000	Hook & Hook	8	16
48387	1/2	80 or 100	16,000	Hook & Hook	8	16



Forged Lever Load Binder



GRADES 30, 43, 70, 80

WORKING LOAD LIMIT: 2,600 to 9,200 lbs.

All components are forged, not cast. Forged binders are lighter and stronger than cast binders. Under equal force a forged handle will yield and bend while a cast handle may break



Product Code	Chain Grade & Size (in.)				Working Load Limit (lbs.)	Handle Take Up (in.)	Handle Length (in.)	Weight (lbs.)
	G30	G43	G70	G80				
48304	1/4	1/4	-	-	2,600	3.75	11.25	3.0
48305	3/8	3/8	5/16	-	5,400	4.50	16.12	8.1
48306	1/2	1/2	3/8	-	9,200	4.75	16.62	10.6
48769	3/8	3/8	3/8	3/8	7,100	4.50	16.62	8.1

Specialty Forged Lever Load Binder



GRADES 30, 43, 70

WORKING LOAD LIMIT: 5,400 lbs.

Durable powder coated finish. DIXI-LOC BINDERS provide extra security by allowing the binder to be locked in closed position using a pad lock, linchpin or bolt. COMPRESSION BINDERS are designed for securing bar and rod steel, lumber, poles and machinery with rubber tires. EZ GRAB BINDERS are military style binders designed to use handle leverage to remove slack from the chain before hook-up, achieving correct tension on the first try.



Compression Binders

Product Code	Binder Type	Description	Chain Grade & Size (in.)			Standard Package	Working Load Limit (lbs.)	Handle Take Up (in.)	Handle Length (in.)	Weight (lbs.)
			G30	G43	G70					
48385	Dixi-Loc Binder	Lockable	3/8	3/8	5/16	4	5,400	4.50	16.62	8.50
48395	Compression Binder	Metal Spring	3/8	3/8	5/16	4	5,400	4.50	16.62	14.60
48325	EZ Grab Binder	Lever	3/8	3/8	5/16	4	5,400	4.50	18.38	8.75

E-Z Pro® Cam Release Lever Binder



GRADES 30, 43, 70

WORKING LOAD LIMIT: 5,400 to 9,200 lbs.

Effortlessly release this load binder without using any tools or prying— all it takes is one finger. Due to its unique design, the binder's handle releases the load at the same point every time – when the handle is perpendicular to the body of the binder. Low-energy release prevents the binder from snapping back over center.

Binder releases effortlessly without the use of any tools or prying. Free turning, 360° continuous swivel action in both tongue and clevis for enhanced straight line pull. Highly visible, durable yellow powder coated finish.



48405: 5,400 lbs. Working Load Limit

48406: 9,200 lbs. Working Load Limit

Product Code	Chain Grade & Size (in.)			Standard Package	Working Load Limit (lbs.)	Handle Take Up (in.)	Handle Length (in.)	Weight (lbs.)
	G30	G43	G70					
48405	3/8	3/8	5/16	4	5,400	4.75	16.62	9.0
48406	1/2	1/2	3/8	4	9,200	4.75	16.62	9.8



Hoists

SERIES 602 & 603 Mini Ratchet Lever Hoists

SERIES 602 WORKING LOAD LIMIT: 550 lbs.
SERIES 603 Working load limit: 1,100 lbs.

The CM Series 602 & 603 Mini-Ratchet Lever Hoists are the most compact ratchet lever hoists on the market. They perform just like the larger models, but can be easily transported and stored in a toolbox.

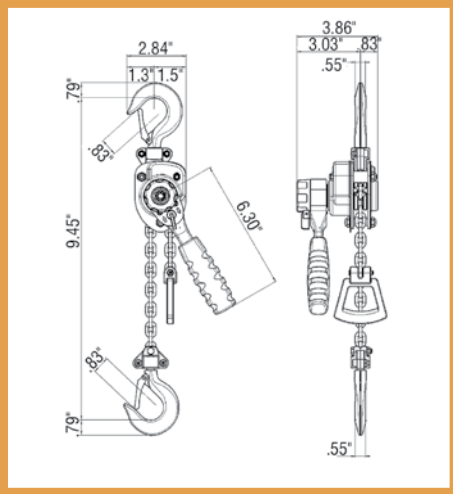
Plated load chain is standard. Weston-type load brake. Rubber hand grip for better comfort and security. Lightweight design for easy portability. Use in confined spaces with one-hand operation. Forged upper and lower hooks with latches standard. Impact-resistant, all-steel frame, gear case and cover. Hardened link-type alloy steel load chain for strength and long wear. Free wheeling feature allows for quick load attachment. Metric rated.



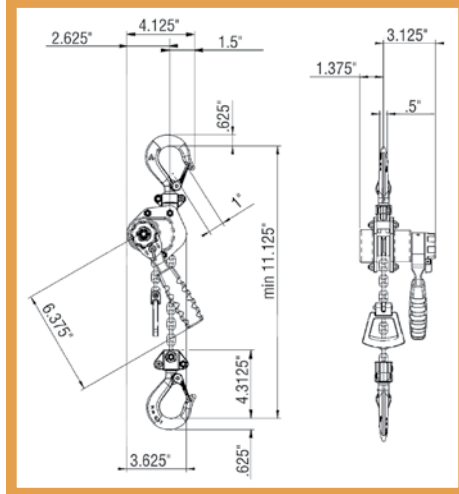
Series 602

Series 603

602 DIMENSIONS



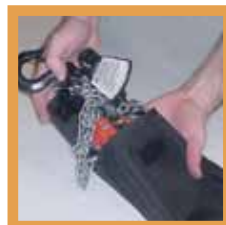
603 DIMENSIONS



Product Code	Model Number	Rated Capacity		Lift (ft.)	Number of Chainfalls	Minimum Distance Between Hooks (in.)	Lift with One Full Lever Turn (in.)	Handle Length (in.)	Handle Pull @ W.L.L. (lbs.)	Weight (lbs.)
		lbs.	kg.							
0210	Series 602	550	250	5	1	9.45	3.15	6.300	56	6.0
0214	Series 602	550	250	10	1	9.45	3.15	6.300	56	7.0
0212	Series 602 Carry Bag	-	-	-	-	-	-	-	-	0.3
0215	Series 603	1,100	500	5	1	11.125	1.57	6.375	78	7.0
0216	Series 603	1,100	500	10	1	11.125	1.57	6.375	78	8.0
0217	Series 603 Carry Bag	-	-	-	-	-	-	-	-	0.3



Perform just like larger hoists, but small enough to fit in the palm of your hand.



Convenient Carry Bag

Terms of Sale

Contact Us

Order Placement or Product Questions

Our customer service center listed below can help you with order placement or questions about any products contained in this brochure.

Columbus McKinnon Corporation

140 John James Audubon Parkway
Amherst, New York 14228
800-888-0985 • 716-689-5400
Fax 716-689-5644

Copyright © 2014 Columbus McKinnon Corporation. No part of this publication may be reproduced, stored in a retrieval system, used in a spreadsheet, or transmitted in any form or by any means - electronic, mechanical, photocopying, recording, or otherwise - without the permission of Columbus McKinnon Corporation.

The following are registered trademarks of Columbus McKinnon Corporation: CM, Dixie Industries, EZ Pro



Minimum Shipment Requirements:

Orders will be accepted for \$100.00 or more shipped to a place of business.

Shipping Terms: F.O.B. shipping point with freight allowed on single shipment with a net weight of 500 lbs. or greater, to one destination within the continental United States. Carrier and routing will be at the discretion of Columbus McKinnon Corporation. Forgings and chain products may be combined to meet freight requirements.

Payment Terms:

1% 10 days/Net 30 days from date of invoice

Credit Card Purchases:

CM accepts both MasterCard and Visa for payment of invoices. Please discuss with your Customer Service Representative at the time of placing your order. Credit card purchases are at net invoice value and there are no discounts available.

Returned Goods Policy:

- Authorization to return any material to CM for credit must have prior approval from CM Customer Service in Chattanooga, Tennessee. A Return Goods Number (RGN) must be obtained from Customer Service at 1-800-756-6656.
- The material must be returned to the destination specified by CM with the Return Goods Authorization visibly displayed on the outside of the carton, preferably on the shipping label. Unauthorized return of material will be refused and if returned without permission, the customer will be liable for delivery, storage and return freight charges.
- All customers will have the ability to implement an annual return without a restocking charge as long as that return meets the above mentioned time frame of one (1) year plus an offsetting order that represents or exceeds the dollar amount of like products being returned.
- All material must be returned to CM on a prepaid transportation charge basis. Collect shipments will be refused.
- All return goods accepted for credit are subject to a handling charge to cover the cost of inspection, testing & repackaging. Reconditioning costs, if necessary, will be charged.
- Engineered products specifically designed for unique applications and classified, as standard product cannot be returned for credit.
- The normal restocking charge for all returns is 20% of the value of the returned material plus reconditioning costs, if any. Restocking charges will not apply to the return of standard length of load chain for credit. All requests for authorization to return this material must be submitted within 60 days of shipment date except in the case of load chain.
- RGN authorizations are valid for 90 days. After 90 days, you must reapply for an RGN

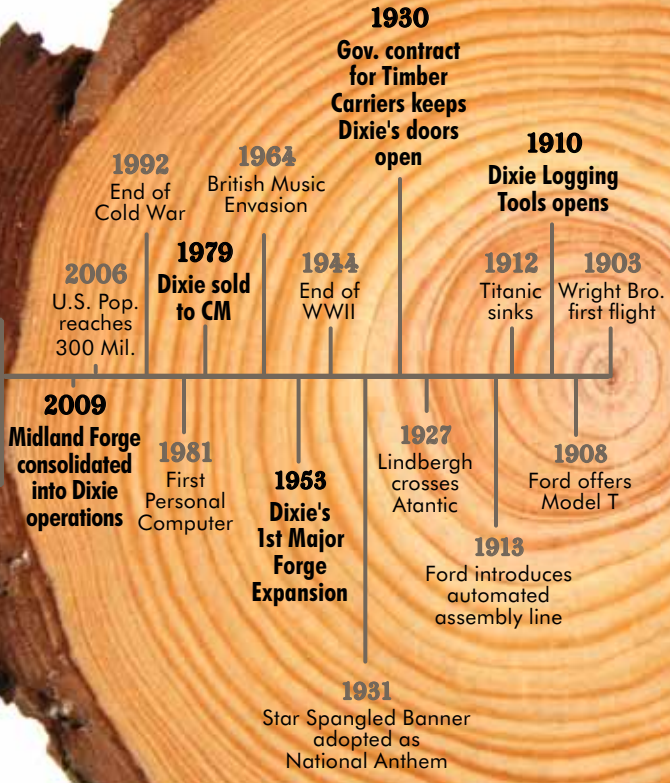
Discrepancies:

Please contact our Customer Service department within five (5) days of receipt of order to verify that a discrepancy has occurred. Claims for obvious freight company shortages should be filed directly with the carrier. Columbus McKinnon ships all orders F.O.B. shipping point. We will be glad to assist you to the extent of our ability.

Prices are subject to change without notice.
Price in effect at time of shipment will apply.

Dixie Time Line

2010
Dixie's
100th
Anniversary



COFFING
HOISTS

BUDGIT
Hoists



SHAW-BOX

ABELL-HOWE



UNIFIED

USA: Ph: (800) 888.0985 • (716) 689.5400 • Fax: (716) 689.5644
CANADA: Ph: (877) 264.6478 • Fax: (877) 264.6477



www.cmworks.com