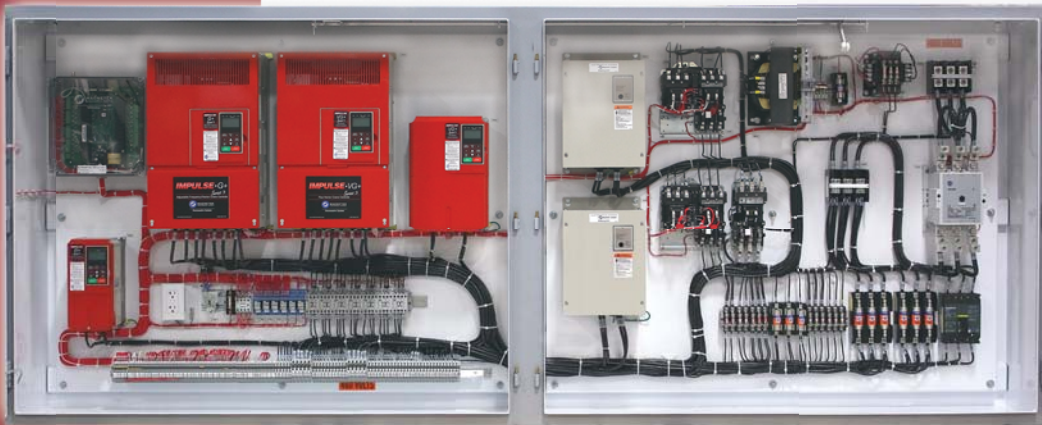


COMPLETE CONTROL PANELS

MAGNETEK'S CONTROL PANELS FEATURE ALL THE COMPONENTS NEEDED TO PROVIDE COMPLETE MOTOR CONTROL



Magnetek offers pre-engineered or custom engineered panels featuring our high quality components designed for your specific application requirements. For specialized and unique applications, custom panels are designed and built to your specifications.

With our combination of extensive application experience and leading-edge products, Magnetek provides the ultimate solution for overhead motion control.

CUSTOM CONTROL PANELS

Magnetek's custom panels with IMPULSE® and OmniPulse® crane controls provide the ultimate solution for overhead material handling. Built and designed to your specifications, these panels include all the standard features of our pre-engineered panels, and can be customized with an unlimited number of configurations, components and accessories. In addition, our skilled engineering staff can provide technical support and overhead handling expertise when quoting your project.

AVAILABLE CUSTOM OPTIONS INCLUDE:

- Enclosures for caustic and other environments
- Wiring for radio remote controls
- Mainline contactors
- Rod disconnects
- Control transformers
- Flanged disconnects
- Main circuit breakers
- NEMA brake contactors
- Load and line reactors
- Air-conditioning
- Cooling fans
- Heaters and thermostats
- Enclosure insulation
- Selector switches
- Indicating lights
- Door mounted keypads
- Horns/bells
- UL 508 certification

PRE-ENGINEERED CONTROL PANELS



Our pre-engineered standard panels are ideal for single motion control. They are easy to install, offer cost-effective and reliable operation, and are available for quick delivery.

IMPULSE®•G+ Series 3, IMPULSE®•VG+ Series 3, and IMPULSE®•G+ Mini drives can be purchased as part of a complete, pre-engineered motor control system.

STANDARD FEATURES:

- IMPULSE®•G+ MINI
1/4–20 HP 230 Vac
1/2–20 HP 460 Vac
- IMPULSE®•G+ Series 3
1–30 HP 230 Vac
1–60 HP 460 Vac
- IMPULSE®•VG+ Series 3
1–30 HP 230 Vac
1–60 HP 460 Vac
- 120 Volt control interface
- Brake contactor
- Branch fusing
- Built-in electronic motor thermal overload protection
- Dynamic braking resistor(s)
- Basic wiring diagram
- All wiring to a single terminal strip
- Clearly marked wires (at both ends)
- NEMA 4/12 enclosure

AVAILABLE OPTIONS:

- Mainline contactors
- Rod disconnects
- Control transformers
- Line or load reactors



For more information, contact Magnetek Material Handling or your local Magnetek Sales Representative.



MAGNETEK
MATERIAL HANDLING | ELECTROMOTIVE SYSTEMS

N49 W13650 Campbell Drive
Menomonee Falls, WI 53051
Toll-Free Phone 800.288.8178
Toll-Free Fax 800.298.3503
Phone 262.783.3500
Fax 262.783.3510

WWW.MAGNETEKMH.COM

Pub No. panels_09

© Magnetek, Inc. 2009